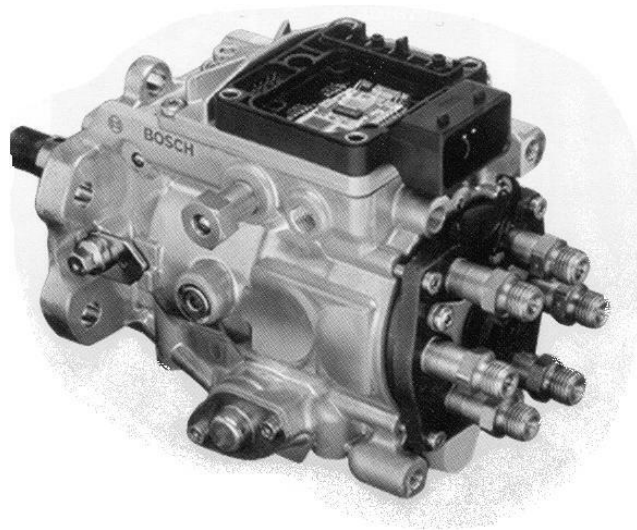


Distributor pump (VE, VP)



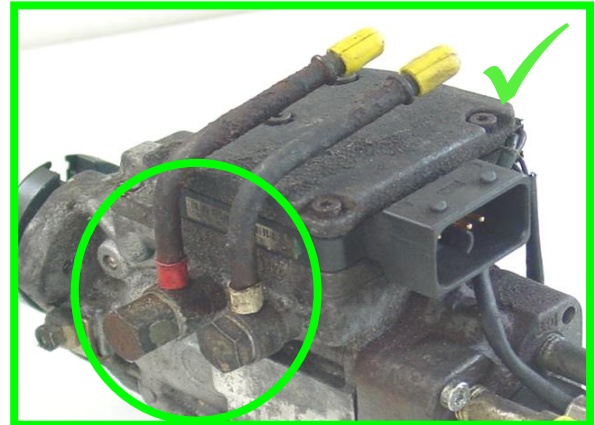
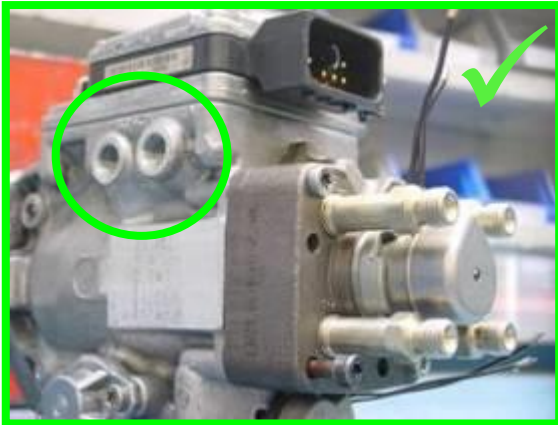
Criteria for Sorting:

- Incomplete/dismantled
- Mechanical damage
(On housing and thread)
- Damaged cable
- Damaged electrical connector
- Corrosion/ finishing/ oxidation
- Not identifiable

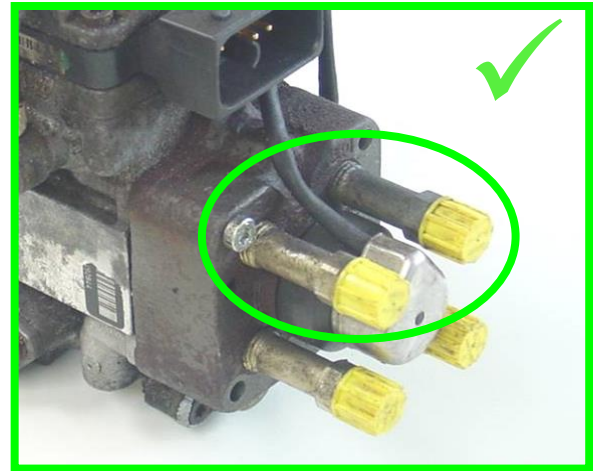
Criteria: incomplete / dismantled



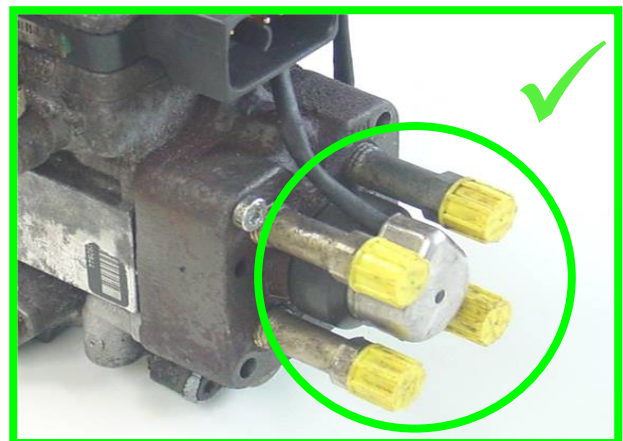
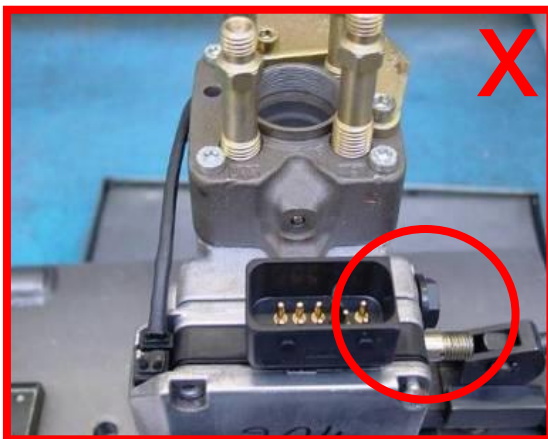
Return with and without screw nut → acceptable



Return with and without overflow valve → acceptable
(Hint: add plug/ Back in Box)

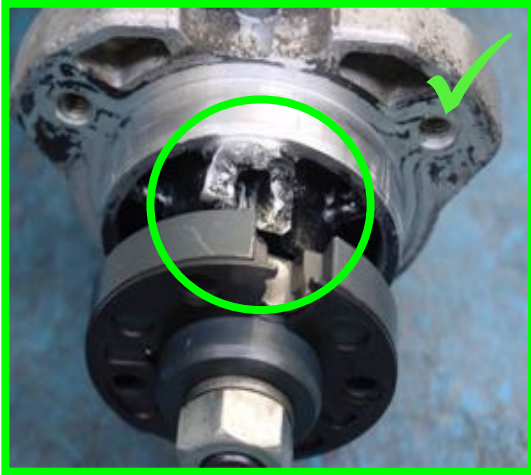


Return without pipe connection → acceptable

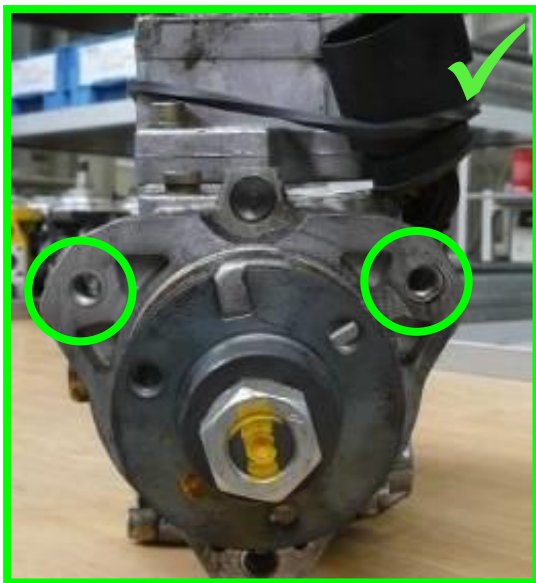


Return without DMV11 → not acceptable

Criteria: mechanical damaged

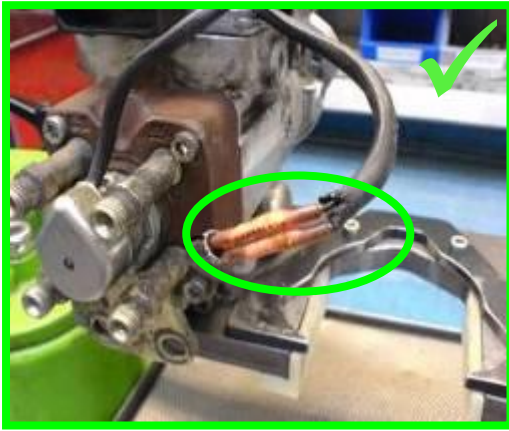


Damaged housing → acceptable



Damaged thread → acceptable

Criteria: Damaged cable



Damaged cable, for example demolished, sliced, temporary repaired → acceptable



Crimped cable → acceptable



Cable connectors for tuning → acceptable



Damaged cable at DMV 10 → acceptable

Criteria: Damaged electrical connectors



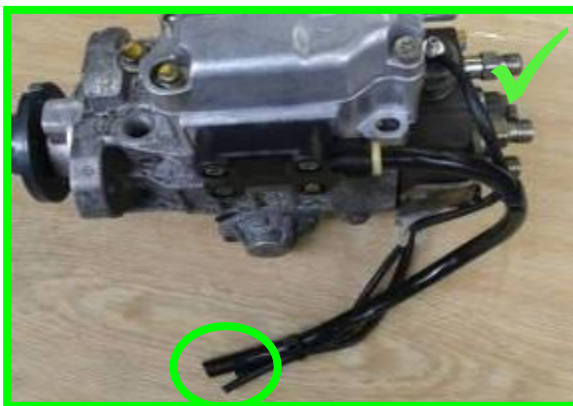
broken connector → acceptable



Damaged pins → acceptable



Slightly damaged connector max 2mm → acceptable



Missing circuit points → acceptable



Defective circuit points → acceptable

Criteria: corrosion / oxidation / finishing



Corrosion → acceptable



Oxidation → acceptable



Finnishing → acceptable

Kriterium: nicht identifizierbar



Product labeling with stamped figures/ engrave device:
Usage of not genuine Bosch product numbers → not acceptable