

NEW TO RANGE

MDSP-102-2021



CATERPILLAR

CAT 3500 EUI Injector Parts Catalogue



DISCOVER

DIESEL

EXCELLENCE

Tel: +44 (0) 1772 694185

testequipment@merlindiesel.com



www.merlindiesel.com

Manufacturer's part numbers are given for reference purposes only and do not imply that in all cases the parts are of their manufacture. Illustrations and Technical Data are non-binding and are subject to change as a result of technological progress.

EUI, HEUI & Common Rail Test Stands	Page 2
Training & Tooling	Page 3
Cross Reference Numbers	Page 4-5
392-0206 (20R1270)	Page 6
392-0200 (20R1264)	Page 7
392-0214 (20R1275)	Page 8
392-0217 (20R1278)	Page 9
392-0219 (20R1280)	Page 10
392-0202 (20R1266)	Page 11
392-0218 (20R1279)	Page 12
392-0211 (20R0849)	Page 13
392-0216 (20R1277)	Page 14
Parts Index	Page 15
Parts Kit Index	Page 16-17

HARTRIDGE HK1400 EXPERT CAM-BOX



HK1400 EUI APPLICATIONS

VOLVO	E3, E1, A SERIES
LAND ROVER	TD5
JOHN DEERE	E1, A SERIES
VOLVO BOSCH	A SERIES
CAT EUI	C10, C12, C15, C18, C27, C32, 3500
SCANIA	11, 12, 16
IVECO	CURSOR 8, 10, 13, E1
DETROIT DIESEL	SERIES 60 N2, N3
VW	PD, PDB, PPD (PIEZO)
CUMMINS	CELECT
NISSAN	BOSCH, GE13
DELPHI	DAF EUP
BOSCH	MACK, MB ACTROS, MB ATEGO, VOLVO

MERLIN S9000 MKII



S9000 MK II APPLICATIONS

CATERPILLAR	3408, 3412, 3126A, 3126B, C7/C9 HEUI
NAVISTAR	DT446E, DT530E HEUI
FORD POWERSTROKE	POWERSTROKE 3126 TYPE
BOSCH	COMMON RAIL INJECTORS
DELPHI	COMMON RAIL INJECTORS
DENSO	COMMON RAIL INJECTORS
CONTINENTAL	COMMON RAIL INJECTORS

HARTRIDGE TOLEDO HEUI MASTER



TOLEDO APPLICATIONS

FORD POWERSTROKE	4.5L V6, 6.0L V8, 7.3L V8
NAVISTAR	DT444E, DT446E, DT530E, DT570- HT570, VT275, VT365
ISUZU	4JX1
CATERPILLAR	3408, 3412, 3116E, 3126A, 3126B, C7,C9

For more information on the specifications for the test solutions, please request a brochure or visit merlindiesel.com

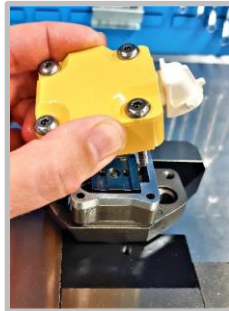
Training & Tooling Solutions at Merlin Diesel

Merlin Diesel's extensive Research and Development programme in the field of EUI and HEUI has led to a surge of interest from technicians worldwide. The need for a qualified and skilled work force is essential for garage and workshop productivity.



In response to this demand Merlin have created a state-of-the-art training facility dedicated to providing an in-depth understanding of the processes involved in effective, inspection, fault diagnosis, fault correction, re-calibration and test.

All courses cover theory and practical demonstrations, equipping technicians with the practical skill to effectively identify faults and repair the relevant unit by the course's completion.



We provide comprehensive tool kits to compliment the courses we are offering. The tool kits cover a complete disassembly and assembly process for all the modules in the prospectus. The kits contain tools for the following technologies:

Technologies & Brand			
Bosch CRI/CRIN	Denso/VDO CRI	CAT CRI & CRP	Delphi Technologies EUI
Bosch EUI/EUP	All Makes HEUI	CAT EUI	Delphi Technologies/CAT EUI (Valve Kit)
Detroit Diesel EUI	Bosch EUI/EUP (Valve Kit)		

Merlin courses are open to all - Competitive pricing policy - Access to post-training support

For more information please contact: testequipment@merlindiesel.com

Cross Reference Numbers

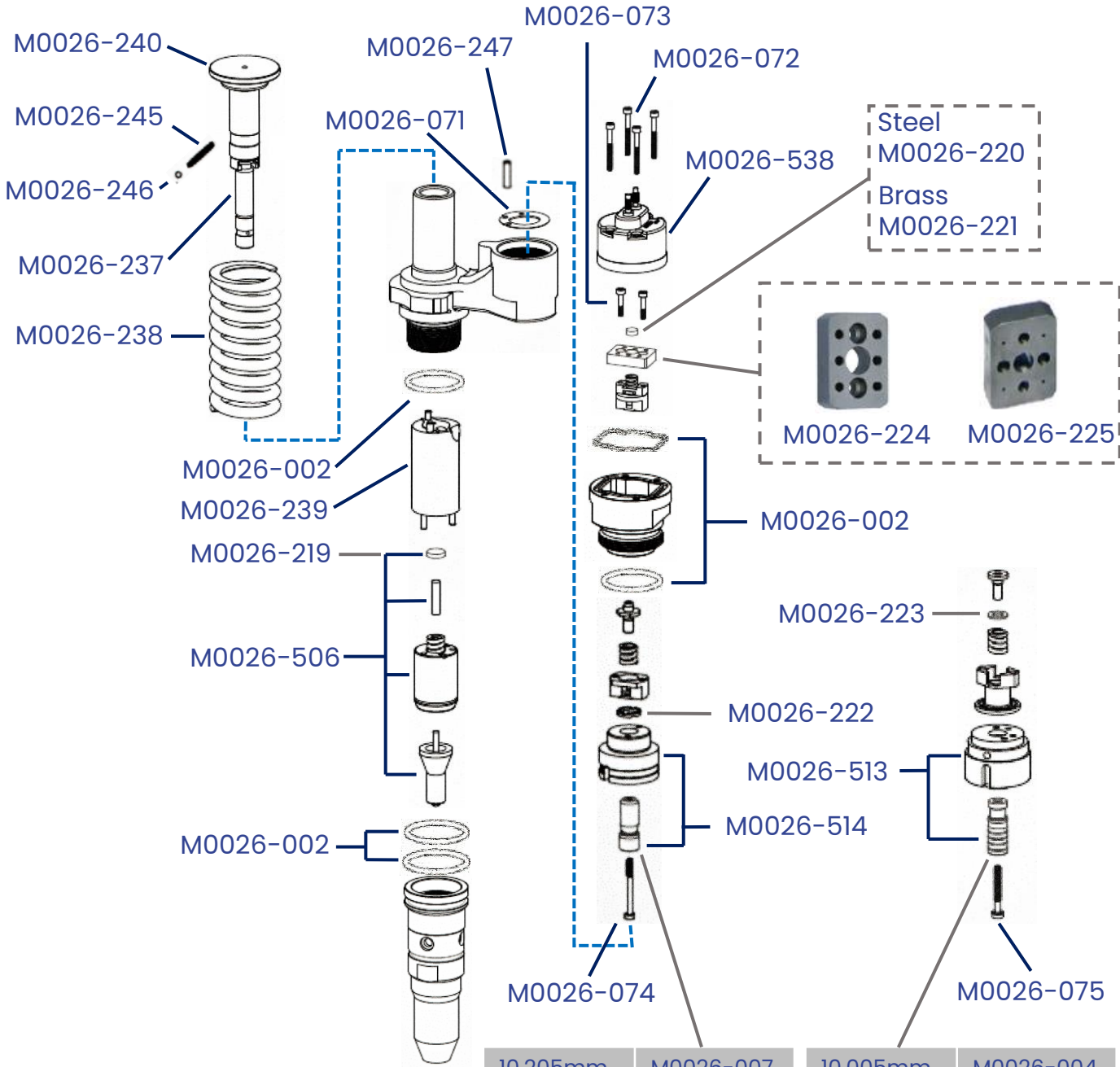
Page	Current	Current	Alternative	Alternative	Alternative	Alternative
6	392-0206	20R1270	132-0202	162-8809	229-0194	250-1306
6	392-0206	20R1270	386-1758	0R8891	0R8688	10R1288
7	392-0200	20R1264	144-5665	162-8813	229-0197	250-1300
7	392-0200	20R1264	386-1752	0R9944	10R1284	
8	392-0214	20R1275	114-6469	126-7995	150-4456	229-0193
8	392-0214	20R1275	250-1314	386-1766	0R8892	0R8690
8	392-0214	20R1275	10R1290			
9	392-0217	20R1278	230-9457	386-1769	10R3255	
10	392-0219	20R1280	246-1854	386-1771	10R7238	
11	392-0202	20R1266	250-1302	386-1754	10R1303	172-4676
11	392-0202	20R1266	229-0201			
12	392-0218	20R1279				
13	392-0211	20R0849	250-1311			
14	392-0216	20R1277	248-1079	386-1768	10R7235	

CAT 3500 EUI Injector Parts



392-0206

20R1270



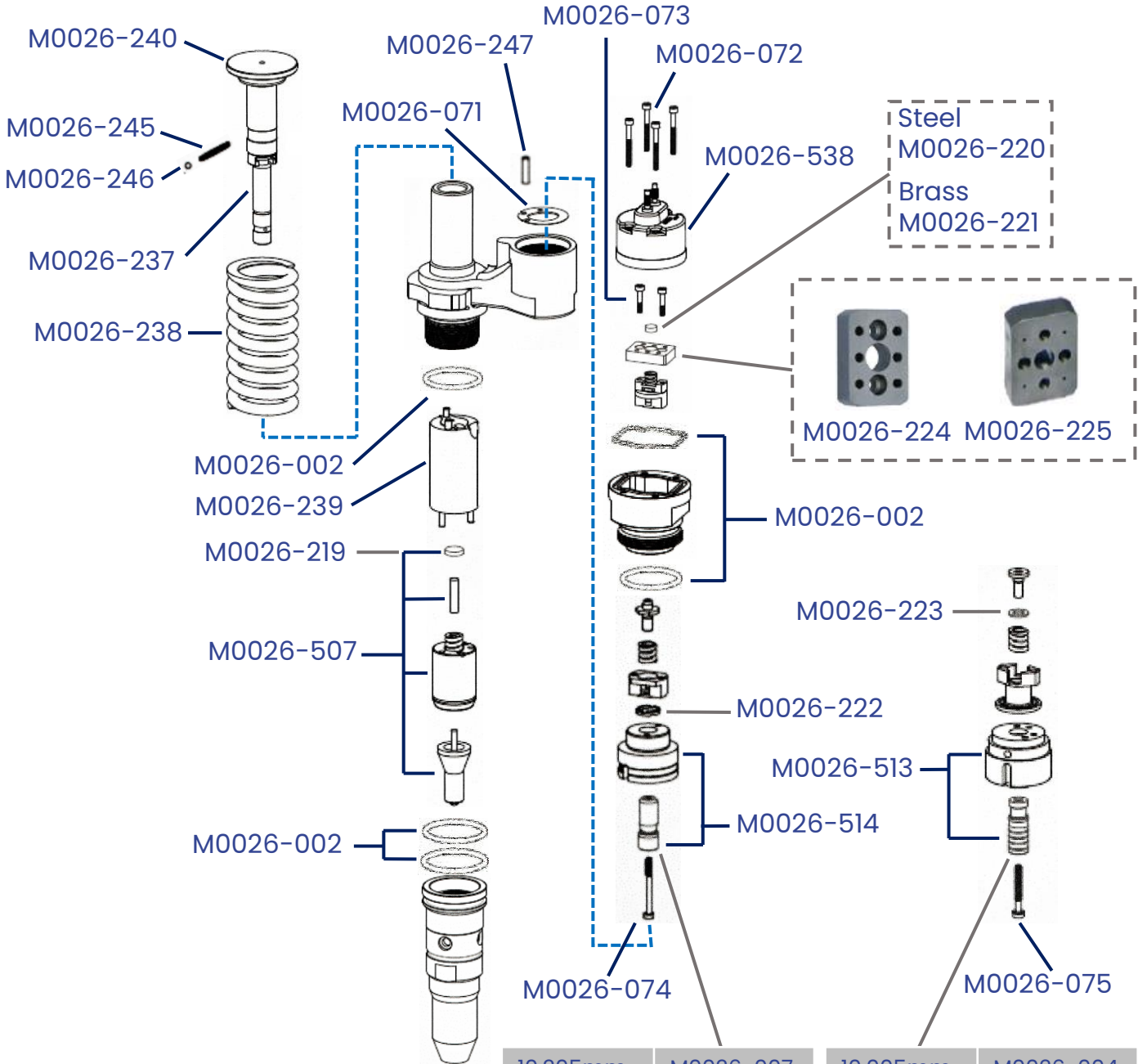
10.205mm	M0026-007	10.005mm	M0026-004
10.210mm	M0026-008	10.010mm	M0026-005
10.215mm	M0026-009	10.015mm	M0026-006

CAT 3500 EUI Injector Parts



392-0200

20R1264



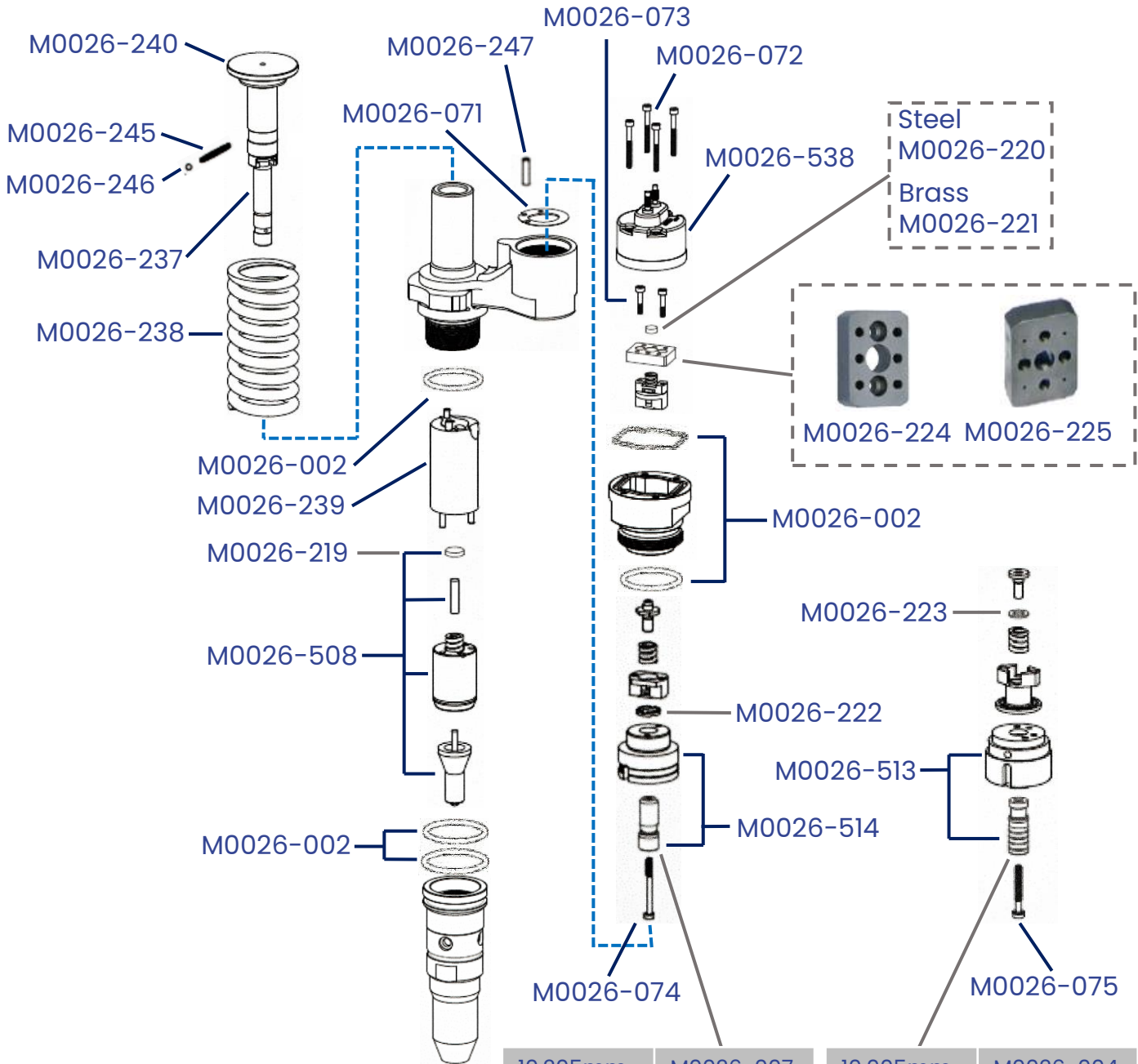
10.205mm	M0026-007	10.005mm	M0026-004
10.210mm	M0026-008	10.010mm	M0026-005
10.215mm	M0026-009	10.015mm	M0026-006

CAT 3500 EUI Injector Parts



392-0214

20R1275



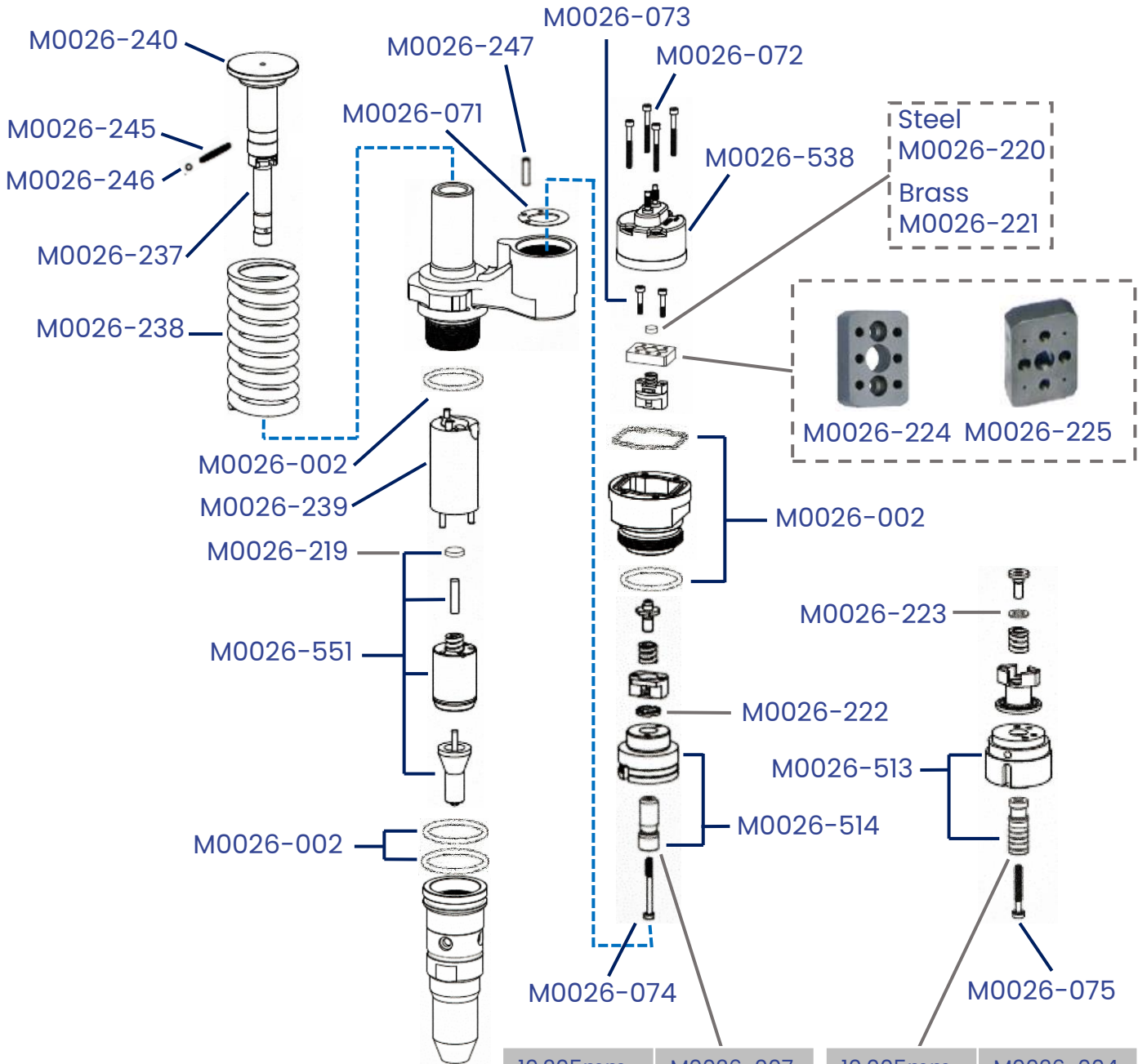
10.205mm	M0026-007	10.005mm	M0026-004
10.210mm	M0026-008	10.010mm	M0026-005
10.215mm	M0026-009	10.015mm	M0026-006

CAT 3500 EUI Injector Parts



392-0217

20R1278



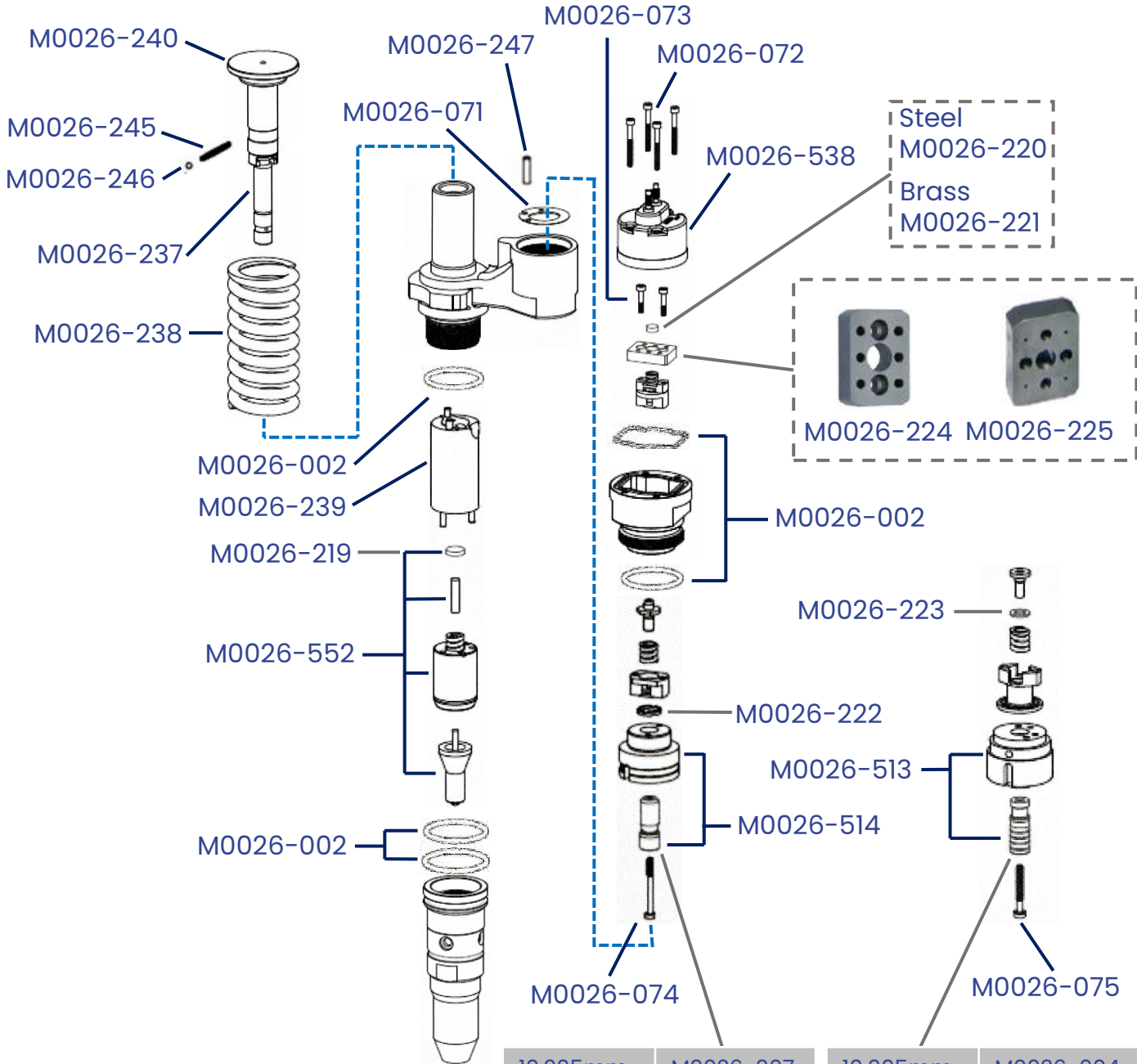
10.205mm	M0026-007	10.005mm	M0026-004
10.210mm	M0026-008	10.010mm	M0026-005
10.215mm	M0026-009	10.015mm	M0026-006

CAT 3500 EUI Injector Parts



392-0219

20R1280



Steel
M0026-220
Brass
M0026-221



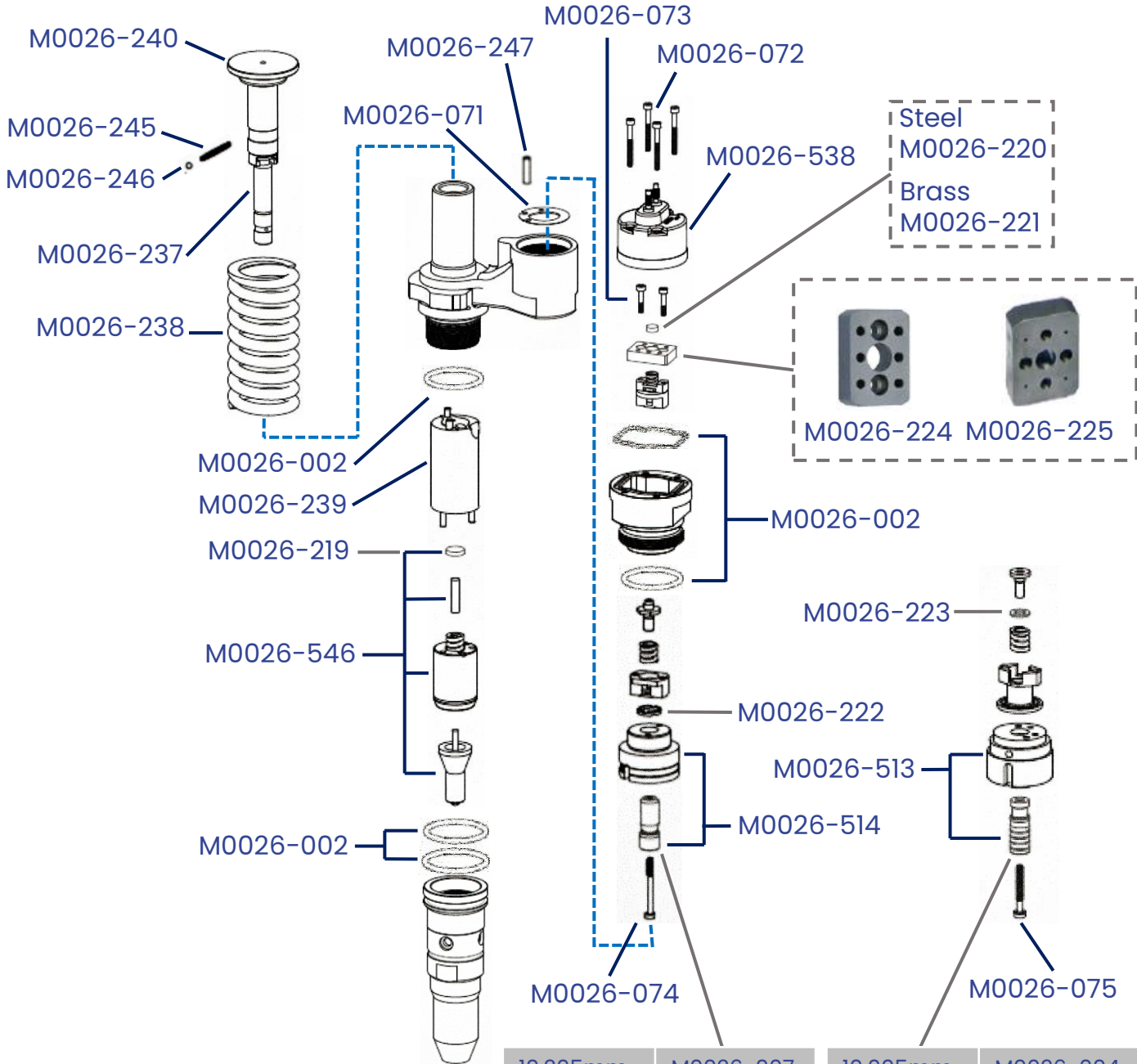
10.205mm	M0026-007	10.005mm	M0026-004
10.210mm	M0026-008	10.010mm	M0026-005
10.215mm	M0026-009	10.015mm	M0026-006

CAT 3500 EUI Injector Parts



392-0202

20R1266



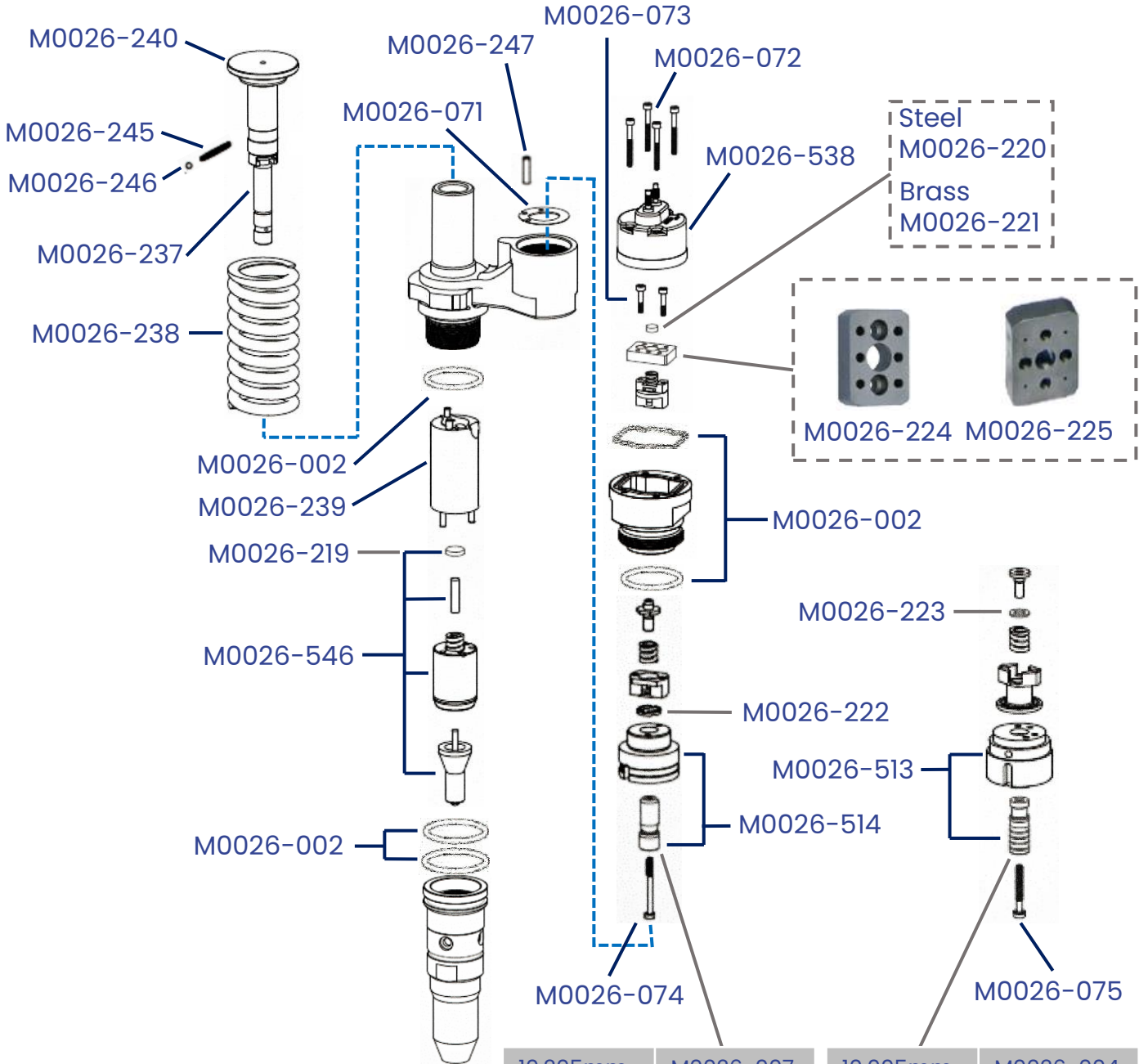
10.205mm	M0026-007	10.005mm	M0026-004
10.210mm	M0026-008	10.010mm	M0026-005
10.215mm	M0026-009	10.015mm	M0026-006

CAT 3500 EUI Injector Parts



392-0218

20R1279



Steel
M0026-220
Brass
M0026-221



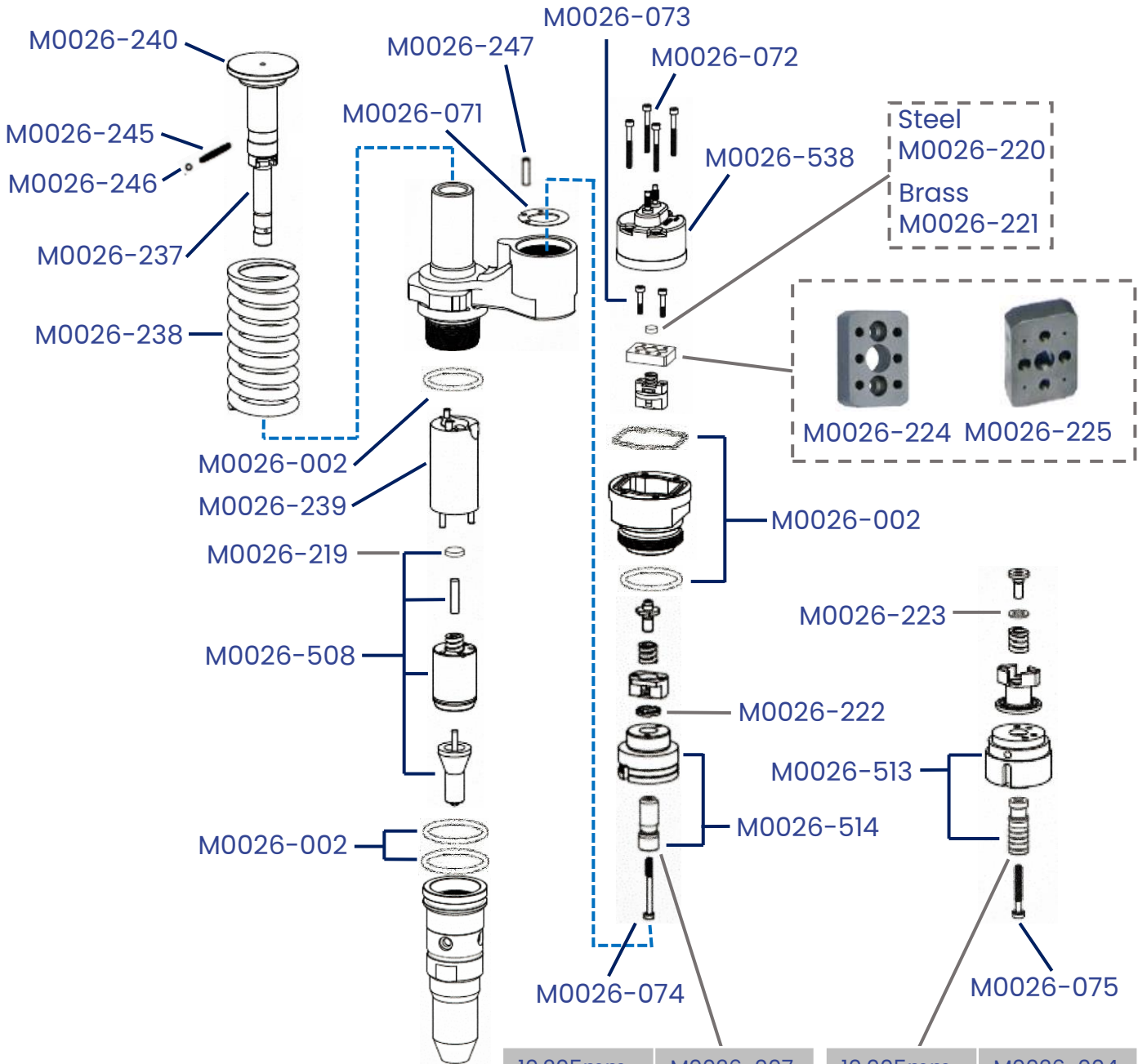
10.205mm	M0026-007	10.005mm	M0026-004
10.210mm	M0026-008	10.010mm	M0026-005
10.215mm	M0026-009	10.015mm	M0026-006

CAT 3500 EUI Injector Parts



392-0211

20R0849

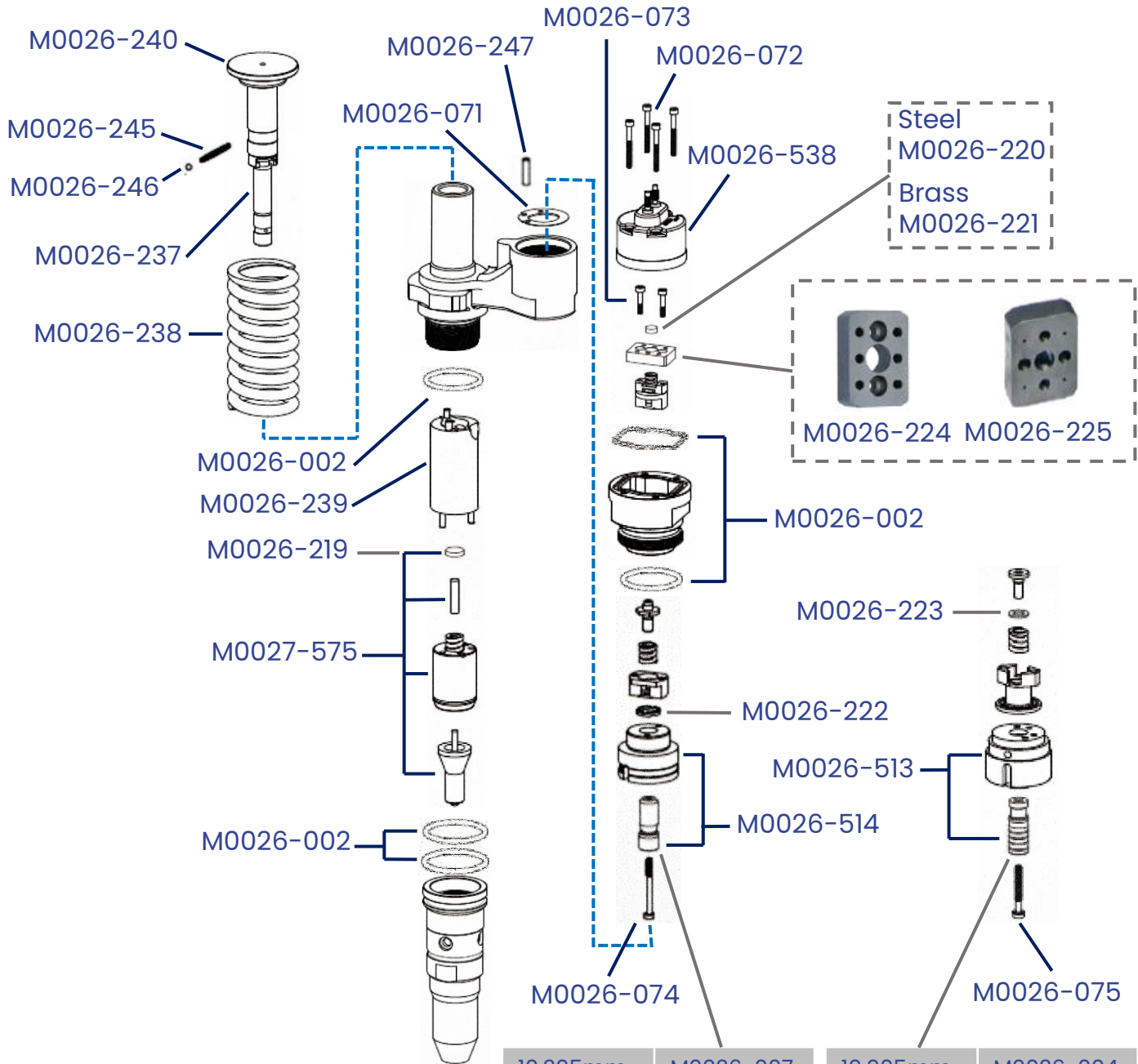


10.205mm	M0026-007	10.005mm	M0026-004
10.210mm	M0026-008	10.010mm	M0026-005
10.215mm	M0026-009	10.015mm	M0026-006

CAT 3500 EUI Injector Parts

392-0216

20R1277



10.205mm	M0026-007	10.005mm	M0026-004
10.210mm	M0026-008	10.010mm	M0026-005
10.215mm	M0026-009	10.015mm	M0026-006

Parts Index

Part no.	Description	Pack size
M0026-002	Seal kit	1
M0026-007	Control valve smooth 10.205mm	1
M0026-008	Control valve smooth 10.210mm	1
M0026-009	Control valve smooth 10.215mm	1
M0026-071	Deflector plate	6
M0026-072	Solenoid screws	4
M0026-073	Armature plate screws	8
M0026-074	Control valve screws smooth type	12
M0026-075	Control valve screws grooved type	12
M0026-222	Crinkly shims kit 1.90mm-2.05mm	160
M0026-237	Plunger	1
M0026-238	Spring	1
M0026-239	Spacer	1
M0026-240	Plunger guide	1
M0026-245	Plunger locating spring	10
M0026-246	Ball	1
M0026-247	Control valve Dowel	1
M0026-506	Nozzle group	1
M0026-507	Nozzle group	1
M0026-508	Nozzle group	1
M0026-513	Control valve assembly grooved	1
M0026-514	Control valve assembly smooth	1
M0026-538	Solenoid	1
M0026-546	Nozzle group	1
M0026-551	Nozzle group	1
M0026-552	Nozzle group	1
M0027-575	Nozzle Group	1

CAT 3500 EUI Injector Parts



Individual Adjustable items from kits

M0026-219

NOP Shims

Number	Size mm
M0028-2019	2.00
M0028-2020	2.05
M0028-2021	2.10
M0028-2022	2.15
M0026-048	2.20
M0026-049	2.25
M0026-050	2.30
M0026-051	2.35
M0026-052	2.40
M0026-053	2.45
M0026-054	2.50
M0026-055	2.55
M0026-056	2.60

M0026-221

Coil shim Brass

Number	Size mm
M0026-023	2.30
M0026-024	2.35
M0026-025	2.40
M0026-026	2.45
M0026-027	2.50
M0026-028	2.55
M0026-029	2.60
M0026-030	2.65
M0026-031	2.70
M0026-032	2.75
M0026-033	2.80
M0026-034	2.85
M0026-035	2.90

M0026-220

Coil shim steel

Number	Size mm
M0026-010	2.50
M0026-011	2.55
M0026-012	2.60
M0026-013	2.65
M0026-014	2.70
M0026-015	2.75
M0026-016	2.80
M0026-017	2.85
M0026-018	2.90
M0026-019	2.95
M0026-020	3.00
M0026-021	3.10
M0026-022	3.20

M0026-223

Armature shim

Number	Size mm
M0026-058	0.50
M0026-059	0.60
M0026-060	0.70
M0026-061	0.80
M0026-062	0.90
M0026-063	0.95
M0026-064	1.00
M0026-065	1.05
M0026-066	1.10
M0026-067	1.15
M0026-068	1.20
M0026-069	1.25
M0026-070	1.30

CAT 3500 EUI Injector Parts



Individual Adjustable items from kits

M0026-224

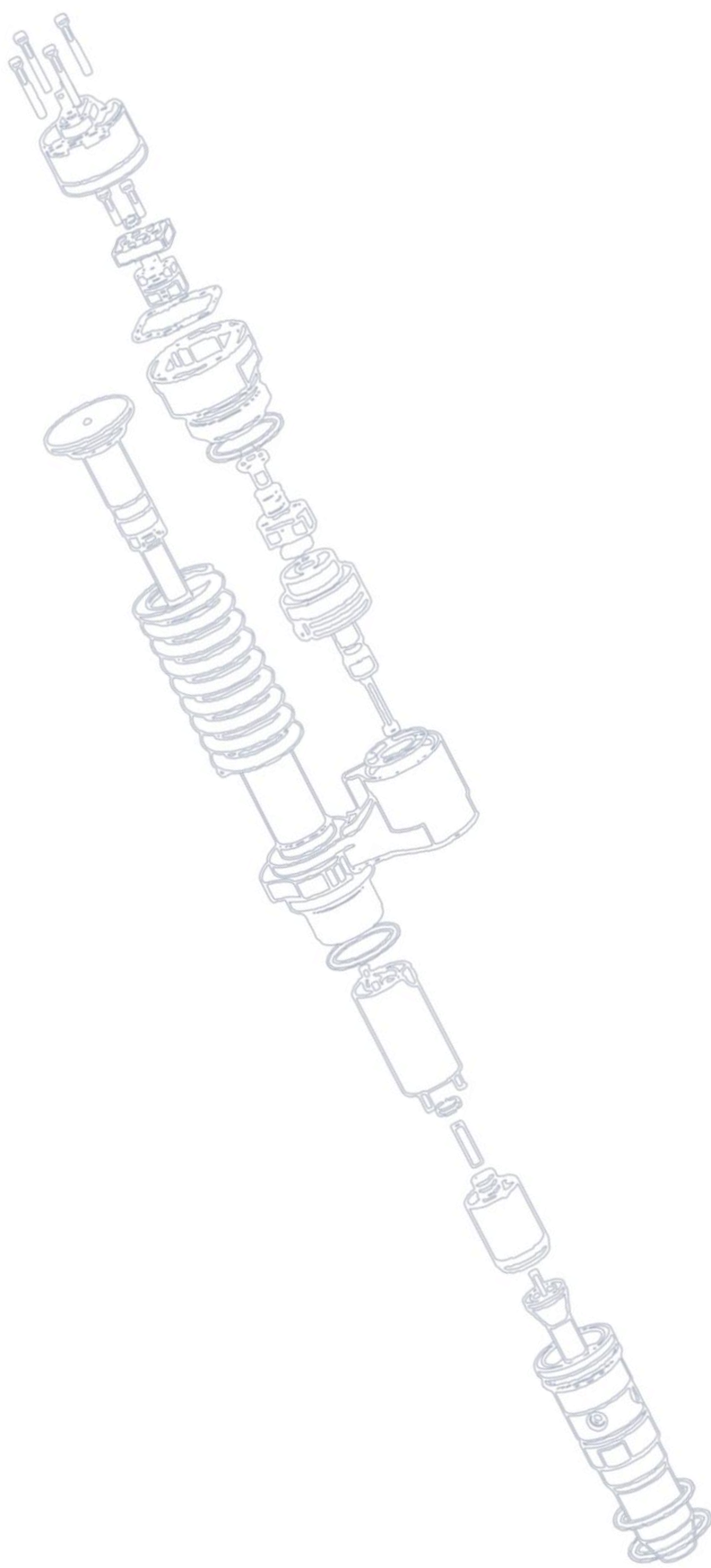
Armature plates

Number	Size mm
M0028-2757	6.60
M0028-2758	6.62
M0028-2759	6.64
M0028-2760	6.66
M0028-2761	6.68
M0028-2762	6.70
M0028-2763	6.72
M0028-2764	6.74
M0026-036	6.76
M0026-037	6.78
M0026-038	6.80
M0026-039	6.82
M0026-040	6.84
M0026-041	6.86

M0026-225

Armature plates

Number	Size mm
M0028-2765	8.01
M0028-2766	8.03
M0028-2767	8.05
M0028-2768	8.07
M0028-2769	8.09
M0028-2770	8.11
M0028-2771	8.13
M0026-042	8.15
M0026-043	8.17
M0026-044	8.19
M0026-045	8.21
M0026-046	8.23
M0026-047	8.25





Diesel Pump / Injector / Test and Repair Service

Suppliers of New and Remanufactured Pumps / Injectors

DPF Cleaning Service

Power Testing / Re-mapping

Technical Support

Test Equipment

Parts Sales

Injector Software Coding Solutions

Conference and Training Facilities

Merlin Diesel Systems Ltd | 189-191 Bradkirk Place | Walton Summit Centre | Preston | Lancashire | PR5 8AJ

TEST EQUIPMENT - Tel: +44 (0) 1772 694185
UK SALES - Tel: +44 (0) 1772 694130
EXPORT SALES - Tel: +44 (0) 1772 694133
EMAIL: testequipment@merlindiesel.com

 www.merlindiesel.com



 Delphi
Technologies



BOSCH
Invented for life



Perkins

 **DENSO**

 **Continental**
The Power of Rubber

 **DISA**



Stanadyne



YANMAR



hartridge ROBIEL