



DIAMAND is Delphi Technologies exclusive wireless electronic diagnostic tool designed specifically for our authorised Diesel network. The coverage is developed in line with the Delphi Technologies OE applications.

Important information

The installation program for DIAMAND can only be obtained via

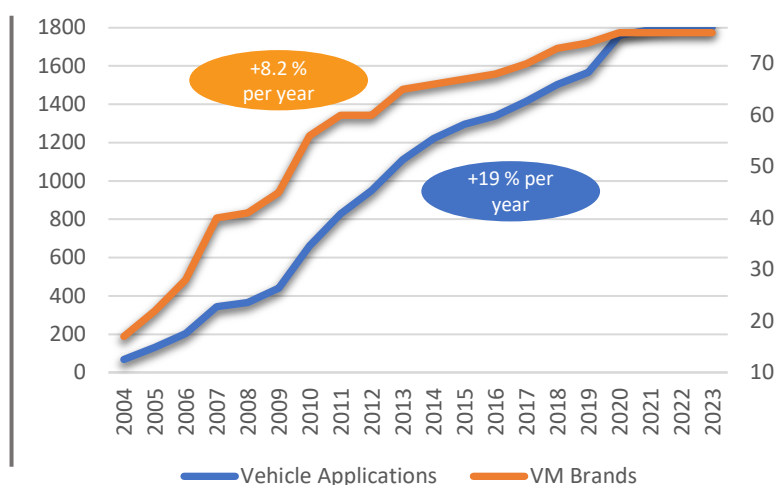
<https://diamand.my-delphi.com/> website.

Refer to DT656 (Direct Evolution) for download and install instructions (available on the same website).

This single executable file will install or update DIAMAND software and/or the applications data.

An Activation Code ordered on the Delphi Technologies License Renewal Tool <https://license-renewal.my-delphi.com/> is necessary to download and activate the DIAMAND license.

Application coverage statistics



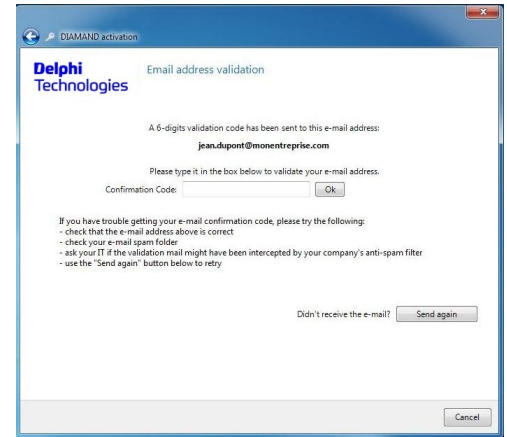
Delphi Technologies releases DIAMAND software annually to ensure our authorised network is up to date and has the capabilities required. DIAMAND software covers both Delphi Technologies systems and some selected non-Delphi ones - 28% of DIAMAND systems coverage is non-Delphi Technologies systems.


2023 DIAMAND SOFTWARE – Part number: DTQX100D

2023 DIAMAND software acts as an update for current users and will also act as a full installation for new DIAMAND users.

Please note:

- DIAMAND Software must be activated on-line in the usual way.
- An email validation step has been included in the process of the license registration. This is to ensure any important Notification related to licensing, actually reaches the right user.



New updates can be checked using the  functionality.

This will open the <https://diamand.my-delphi.com/> web page and let you download the available update.

DIAMAND Functionalities include:

- **Vehicle Diagnostics** – DCU identification, DTC Code read & erase and monitoring, Real Time and Dynamic Parameters displayed as values and graphical formats, ability to view Environmental Data from time of DTC generation, Component Activation, Coding, Special Functions / Routines (parameter learning, read, write and reset, Component Coding, etc.), ECU / DCU Coding and assisted replacement and adjustments, Saved Data Sessions viewer
- **Diagnostic Manuals** – Covering component location and technical information, wiring harness diagrams, diagnostic methods and related Test Equipment information, Appendix section covering sensor information including operating range and test data
- **Vehicle selection** with images of required additional connectors and locations of diagnostic sockets / VIN and Chassis numbers
- **Diagnostics History** – record of vehicles communicated with ability to **save and view** diagnostic sessions
- **Multi-lingual interface:** English, French, German, Spanish, Italian, Portuguese, Turkish, Chinese, Korean, Polish, Russian and Czech.
- **Internet product activation and update functions**

COMPATIBILITY & STATISTICS

Please note: All new applications are exclusive to the YDT450 & YDT460 hardware platforms. YDT300 users must upgrade to the YDT460 to benefit from the full application coverage, access all functionality and be able to benefit from future coverage and software updates. See detail in table below:

DIAMAND Hardware Platforms & Software coverage				
Part Numbers	Description	Evolution of Hardware	Vehicle Application coverage 2023	Detail
YDT300	DELPHI DIAMAND Hardware 2002 to 2006	First launch of Delphi DIAMAND Diagnostic platform, replacing LASER2000	469 System Variants / 41 VM brands	No updates / only supports vehicles up to 2008
YDT450	DELPHI DIAMAND 2 Hardware 2006 to 2007	New platform introduced for compatibility with current and future vehicle communication protocols	1803 System Variants 76 VM brands	EPIC / DPCN exclusive to Diamand 2
YDT460	DELPHI DIAMAND 2 Hardware 2007 onwards	Addition of Wireless communication		Web updates and annual updates for all vehicles

DIAMAND ACTIVATION PROCEDURE

CAUTION: It is necessary to have an Internet connection either on the DIAMAND workstation or on another computer in order to register DIAMAND.

As with previous versions, it is possible to activate the license directly in DIAMAND if the computer on which it is installed is connected to the Internet, or using a removable media (e.g. a USB key) from another computer connected to the Internet.

For full detail on the activation process, please refer to DT553 (Direct Evolution). This note describes the license registration procedure for DIAMAND. For additional details, please refer to the DIAMAND installation and update procedures in the DIAMAND User Manual DDNX148 edition 2014 or later. DT656 (Direct Evolution), also describes the installation and update procedure.

Minimum Windows PC specification required for DIAMAND and 2023 software release:

- Processor: Intel® Core i3 2GHz 3MB Cache or more
- Operating systems supported: Windows 8 & 8.1 32bit and 64bit, Windows 7 32bit and 64bit, Windows Vista 32bit and 64bit
- Memory: 2 Gb or more
- Free space available on the hard drive: 10 Gb or more
- Display: 1280x960 (4/3) or 1440x900 (16/10) or 1920x1080 (16/9) or more
- Internet connection: 2Mb/s or more
- Connectivity: 1 free USB 2.0 port or 1 RS232 port for YDT450 / YDT460 or 1 wireless adaptor supporting IEEE802.11 b or b+g for YDT460
- Microsoft Internet Explorer 9.0 or later
- Microsoft .NET Framework 3.5 (included in the DIAMAND installer)

SOFTWARE ORDERING

DIAMAND software subscriptions are charged on an annual basis. Licenses expire on March 31st each year. All DIAMAND users should order their 2023 license code now to ensure continued access and to benefit from new applications coverage and functionalities.

DIAMAND is mandatory equipment for Delphi Technologies Authorised Common Rail Repair Network. All repair workshops are required to keep this equipment up to date and in a usable condition.

DIAMAND software is sold on an annual subscription basis. Users receive an Activation Code and download the software package online.

Users benefit from the ongoing software updates issued via the Internet until expiry of their license.

The current software expires on March 31st 2023 - Users who do not order the 2023/2024 update will lose access to all Delphi Technologies diagnostic information and ability to communicate with vehicles one month after this date.

DIAMAND Software	
Part number	Description
DTQX100D	2023 DIAMAND software License

The software is charged depending on the month of order, according to the structure below:

2023						2024		
April	May	June	July	August	September	October	November	December
100% of annual price						50% of annual price		
						25% of annual price		

Availability & Ordering:

Orders can be accepted immediately, and Activation Codes will be delivered to the users immediately after the order validation.

DIAMAND software order has to be placed in the License Renewal tool.

To renew your licenses or to activate a new subscription please contact:
purchasing@merlindiesel.com