



New test bench software updates available for  
all three versions of IRIS software

CR Injector | CR Pump | Heavy Duty (EUI, EUP  
and Smart Injector)

**2 install programs are made available in March 2023:**

**IRIS 2023 version: 01.029.00**

**IRIS CRi-PRO 2023 version: 02.029.00**

Delphi Technologies IRIS software continues to be maintained, to support the most recent diesel injection technologies and fill the gap in the existing applications coverage.

IRIS Software is provided online for users to download and the 2023 license code orders can be accepted immediately. This allows direct and fast access to IRIS software and future updates. As the test benches are online, the software can be downloaded directly and installed to the test bench PC.

IRIS will regularly inform the user when new updates are available and Delphi Technologies will continue to communicate the IRIS coverage updates at regular stages throughout the next 12 months license period.

**Note:** IRIS software continues to automatically check and confirm internet connection. If internet connection is not made within a designated time frame, IRIS will cease to operate.

### Annual license fee

The IRIS license fee operates in the same manner as Delphi Technologies other software platforms. Customers pay an annual fee that entitles them to the latest software and free software updates throughout the license period. Therefore, customers benefit by receiving new test plans and any software development as soon as it is made available, at no additional cost.

The IRIS license period operates from 1<sup>st</sup> April to 31<sup>st</sup> March each year with the current year ending on 31<sup>st</sup> March 2023. Customers must renew their licenses before March 31<sup>st</sup> in order to enjoy continued access to the software and the ability to maintain an authorised test and repair solution.

Software downloads act as updates for existing customers and as a full software installation for new customers.

### Reminder:

- Subscribers to the IRIS software require a valid email address to enable full functionality of the software. This is part of the license renewal process. Full details are available in Technical Information note DT645 found in Direct Evolution
- Individual IRIS licenses are required for each technology type and per test bench
- IRIS Operating Dongle YDT486 is required per authorised test bench to run Delphi Technologies IRIS software.

### PART NUMBERS

IRIS software is charged on an annual license basis with the current software expiring 31<sup>st</sup> March 2023. **The part numbers for the 2023/2024 licenses are shown below:**

2023 / 2024 IRIS Software Licenses		
Part Number	Description	Comment
DTQX101D	IRIS CRp License	Common Rail pumps (DFP1, DFP3, DFP4, DFP6...)
DTQX102D	IRIS CRi License	Common Rail Injectors (DFI1.x, DFI2.x, F2x)
DTQX103D	IRIS Heavy-duty License	EUI / EUP / Smart

The software is charged depending on the month of order and remaining license period, see the structure below:

2023						2024		
April	May	June	July	August	September	October	November	December
100% of annual price						50% of annual price		
						25% of annual price		

**Product Availability:** You can place your order for the license updates immediately. Software License codes will be issued upon completion of the order. As soon as you receive your license code you should download and install the new IRIS software.

**IRIS Automatic software updates:** For the start of the new license period the automatic reminder feature that informs users that IRIS updates are available is disabled. We deactivate this feature to avoid customers downloading the latest version of the software before receiving their activation code. If this happens, users will not be able to run IRIS and they will not be able to access the older version.

To renew your licenses or to activate a new subscription please contact:  
[purchasing@merlindiesel.com](mailto:purchasing@merlindiesel.com)

**DO NOT ATTEMPT TO DOWNLOAD AND INSTALL BEFORE YOU HAVE RECEIVED YOUR LICENSE CODE.**

#### How to update your IRIS software manually:

1. Download and install the IRIS software
- NOTE: There are 2 install files on the website. Please select the right one for your machine**
2. You can do this directly from your test bench.
3. Launch IRIS in the normal way and click the "Licenses" button on the main screen of IRIS
4. On the "Licensing information" dialog box, click the "Register Product" button corresponding to the product you wish to register and follow the instructions.
5. Select the activation method you wish to use: ONLINE or OFF-LINE
6. Enter your Activation Code
7. Fill-in your coordinates / user information and follow the displayed instructions. Complete all mandatory fields
8. A Validation Code will be sent to the email used in the previous step
9. Enter the Validation Code into the Confirmation Code box and click 'OK'

**IMPORTANT:** Please retain your license code for your records as you may be requested to supply the Activation Code in the case of any future queries.

### SOFTWARE AND FIRMWARE VERSIONS

In order to maintain your Delphi Technologies authorised test bench and the software packages in the appropriate configurations that allow the technicians to safely and accurately perform Fuel Injection Equipment testing, the version of Magmah Software and the versions of the different installed firmware are read at IRIS start-up. They are then compared to the minimum versions required by Delphi Technologies and Hartridge Ltd.

If the installed versions match or are later than the minimum requirements, IRIS continues operating as normal.

If one or more mismatches are detected, an error message is raised showing what is installed on the machine and what is required. It will be necessary to rectify any out of date software / firmware immediately to continue operation.

- *Any mismatch related to Magmah software will redirect IRIS to its degraded mode, making it only possible to view the archives but no testplan can be run. See Fig. 1*
- *Any mismatch related to the firmware will raise a warning message to the user in IRIS 01.029.00. See Fig. 2*

**As the machine hardware/firmware updates are required to guarantee the accuracy of the IRIS test results, Delphi Technologies and Hartridge Ltd will not offer any continued support of any IRIS related technical issue before these mismatches are addressed and updates performed.**

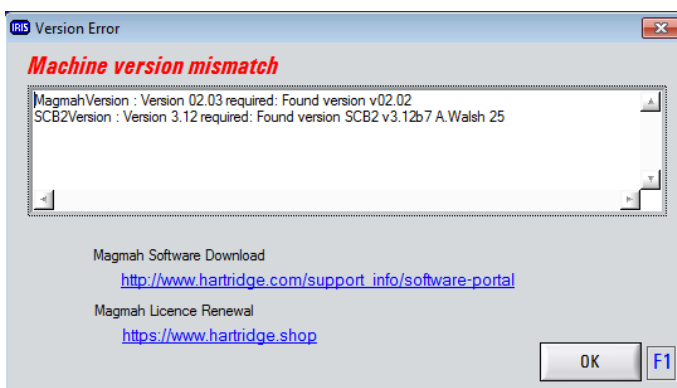


Fig. 1

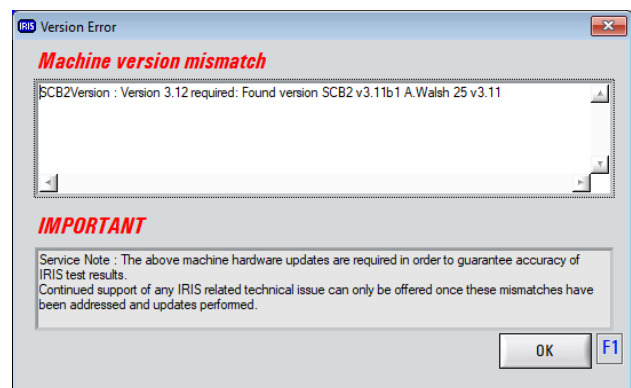


Fig. 2



**Goes to IRIS degraded mode**

**To maintain full IRIS functionality and benefit from Delphi Technologies support, it is mandatory to have the latest versions of Magmah Software & firmware versions installed.**

## AUTHORISED TEST BENCH REQUIREMENTS

### CRi-PC Software requirements

#### Required Hartridge Software

Part Number	Description
MH-i-01	Magmah Plus for CRi-PC (V12.48 or later)
HB403	MCB4 firmware upgrade kit for CRi-PC – version “9.05” or later

Dependent upon software level, PLC chipset may also be required.  
Contact Delphi Technologies Service Operations or Hartridge for details.

### AVM2-PC Firmware & Software requirements for CR injector testing

#### Hartridge Firmware & Software

Part Number	Description
HB414	MCB4 Firmware Chip V9.05 for AVM2PC
HB415	SCB2 Firmware Chip V3.12 or later
HB416**	AE32 Firmware Chip V11
135-12-15*	AVM2-PC Menu System V1.4.0.0 or later Named: Generic Launcher
135-12-01*	MAGMAH Plus V41.07 or later
MH-A-01AS	Valid Maintenance Licence

\*Available from the Hartridge Software Portal, a valid MH-A-01AS Maintenance license required to enable installation.

Contact Delphi Technologies Service Operations or Hartridge for details.

\*\* HB416 requires AE32 PCB to be Issue 4 or later, a service exchange PCB A089E918.S/E is available.

Refer to Hartridge marketing note HMN102A

It is a **mandatory** requirement to install the latest version of the AVM2-PC Menu System

**To renew your licenses or to activate a new subscription please contact:**  
**[purchasing@merlindiesel.com](mailto:purchasing@merlindiesel.com)**

## AUTHORISED TEST BENCH REQUIREMENTS (cont.)

AVM2PC and CRpPC requirements for CR pump testing:

### Required Hartridge Firmware & Software

Part Number	Description	AVM2-PC	CRp-PC
135-12-01*	Magmah Plus for AVM2-PC V41.07 or later	X	
A151A900*	Magmah Plus for CRp-PC V3.05 or later		X
135-12-15*	AVM2-PC Menu System V1.4.0.0 Named: Generic Launcher	X	

To renew your licenses or to activate a new subscription please contact:  
[purchasing@merlindiesel.com](mailto:purchasing@merlindiesel.com)

AVM2-PC requirements for EUI / EUP / Smart injector testing:

### Required Hartridge Firmware & Software

Part Number	Description
HB414	MCB4 Firmware Chip V9.07 for AVM2PC EUI
135-12-15*	AVM2-PC Menu System V1.4.0.0 or later Named : Generic launcher
135-12-01*	MAGMAH Plus V41.07 or later
135-12-25*	AVM2-API V2.04 or later
135-12-41*	AVM2-EUI Data XML Disk V1.33 <i>SCV and NCV AE100/1 V1.30 or later *</i>

\*Available from the Hartridge Software Portal, a valid MH-A-01AS maintenance licence is required to enable installation.

If the AE100/1 is a Mod C box, indicated with a « **Mod C** » label on the front of the box, the user can upgrade from v1.29 to v1.30

If the unit is not a Mod C, it will not be able to be upgraded to the latest version. A replacement will be required. A service exchange unit can be ordered under the P/N: AE100/1.S/E

## AUTHORISED TEST BENCH REQUIREMENTS (cont.)

### CRI-PRO Software & license requirements

Required Hartridge Software	
Part Number	Description
A318A600	Magmah Touch for CRI-PRO (V1.01 or later)
MH-U-01	MAGMAH-TOUCH UNLOCK (12M)*

\*: For a new machine, the activation is done in the factory.

To renew your licenses or to activate a new subscription please contact:  
[purchasing@merlindiesel.com](mailto:purchasing@merlindiesel.com)



## HARDWARE REQUIREMENTS & FITTING INSTRUCTIONS

**IMPORTANT REMINDER:** Changes in the fuel sleeve, push rod, thrust cap, dummy injector and locating spigot hardware requirements for authorised EUI testing have been introduced in 2018.

Several IRIS EUI testplans have been revised since the version 01.024.00B to comply with these updated requirements. Please refer to the technical instructions\*\* in the documents communicated in the MI Note DM1416 released in March 2019, before using IRIS EUI

IT IS **MANDATORY** TO USE THE UPDATED FITTING INSTRUCTIONS AND THE BENCH ACCESSORIES AS SPECIFIED IN THESE REFERENCE TECHNICAL DOCUMENTS

**WARNING:** Not complying with these instructions will lead to incorrect test results and potential operational issues once installed on vehicle.

## IRIS 01.029.00 & 02.029.00 APPLICATIONS COVERAGE

For full coverage, please refer to the documents below, available in Direct Evolution:

- DT595: IRIS EUI testplans list
- DT596: IRIS CR injector testplans list (Light & Medium-duty)
- DT597: IRIS CR pump testplans list
- DT705: IRIS CRi-PRO CR injector (Light, Medium and Euro6 Heavy-duty)

## IRIS 01.029.00 & 02.029.00– MINIMUM VERSIONS SUMMARY

Test Bench						
Software/Firmware	CRi-PC	AVM2PC_CRI	AVM2PC_EUI	AVM2PC_CRP	CRp-PC	CRi-PRO
MagmahVersion	12.48	41.07	2.04	41.07	3.05	1.01
SCB2Version		3.12	3.12	3.12	1	
AE31Version	2			a	b	
AE32Version	g					
AE35Version			1.30			
AE35NCVVersion			1.30			
AE49Version			5			
AE49NCVVersion			0			
MCB4Version	9.05	9.05	9.07	9.05		
APCVersion				3	3	
ACB4Version						1.00D



## NEW COVERAGE

**NOTE:** For more details, please refer to the DT notes mentioned in the previous page.

The CRI-PRO machine with IRIS CRI license support, Light-duty, medium-duty and Heavy-duty Common Rail injectors. The coverage below details only to the F2x injectors, with their testplans released in 2023.

Reference	CRI Type	System	Application	Emissions Standard	Correction Type	Family
BEBJ1D00001	F2P	DAF	MX13 US13	Euro 6	HIT	PS-0275
BEBJ1D00002	F2P	DAF	MX13 US13	Euro 6	HIT	PS-0275
BEBJ1D00003	F2P	DAF	MX13 US13	Euro 6	HIT	PS-0275
BEBJ1D01101	F2P	DAF	MX11	Euro 6	HIT	PS-0275
1925657	F2P	DAF	MX13 US13	Euro 6	HIT	PS-0275
1952045	F2P	DAF	MX13 US13	Euro 6	HIT	PS-0275
1972591	F2P	DAF	MX13 US13	Euro 6	HIT	PS-0275
1925658	F2P	DAF	MX11	Euro 6	HIT	PS-0275
BEBJ1D01102	F2P	DAF	MX11	Euro 6	HIT	PS-0276
BEBJ1D01103	F2P	DAF	MX11	Euro 6	HIT	PS-0276
BEBJ1D01104	F2P	DAF	MX11	Euro 6	HIT	PS-0276
BEBJ1D01001	F2P	DAF	MX11	Euro 6	HIT	PS-0276
1954659	F2P	DAF	MX11	Euro 6	HIT	PS-0276
1952044	F2P	DAF	MX11	Euro 6	HIT	PS-0276
1972590	F2P	DAF	MX11	Euro 6	HIT	PS-0276
1871127	F2P	DAF	MX11	Euro 6	HIT	PS-0276
BEBJ1F06001	F2E	VOLVO	HDE11-EXT SCR	Euro 6	HIT	PS-0286
BEBJ1F06101	F2E	VOLVO	HDE11-EXT SCR	Euro 6	HIT	PS-0286
22282198	F2E	VOLVO	HDE11-EXT SCR	Euro 6	HIT	PS-0286
22282199	F2E	VOLVO	HDE11-EXT SCR	Euro 6	HIT	PS-0286
BEBJ1F08001	F2E	HYUNDAI	L ENGINE	Euro 6	HIT	PS-0287
BEBJ1F08101	F2E	HYUNDAI	L ENGINE	Euro 6	HIT	PS-0287
BEBJ1F08201	F2E	HYUNDAI	L ENGINE	Euro 6	HIT	PS-0287
33800-84310	F2E	HYUNDAI	L ENGINE	Euro 6	HIT	PS-0287
BEBJ1C01001	F2R	DAIMLER	4 CYL	Euro 6	C6	PS-0302
BEBJ1C01002	F2R	DAIMLER	4 CYL	Euro 6	C6	PS-0302
A9362187	F2R	DAIMLER	4 CYL	Euro 6	C6	PS-0302
A9360702187	F2R	DAIMLER	4 CYL	Euro 6	C6	PS-0302
BEBJ1D02001	F2P	DAF	MX13	Euro 6	HIT	PS-0306
2005596	F2P	DAF	MX13	Euro 6	HIT	PS-0306
BEBJ1F10001	F2E	VOLVO	HDE13-EXT SCR	Euro 6	HIT	PS-0309
BEBJ1F10101	F2E	VOLVO	HDE13-EXT SCR	Euro 6	HIT	PS-0309
BEBJ1F10201	F2E	VOLVO	HDE13-EXT SCR	Euro 6	HIT	PS-0309
22311990	F2E	VOLVO	HDE13-EXT SCR	Euro 6	HIT	PS-0309
BEBJ1D04001	F2P	DAF	MX13 US13	Euro 6	HIT	PS-0322
2047600	F2P	DAF	MX13 US13	Euro 6	HIT	PS-0322

**To renew your licenses or to activate a new subscription please contact:**  
[purchasing@merlindiesel.com](mailto:purchasing@merlindiesel.com)