

# PUMP REPAIR

## COMMON RAIL

Suction Control Valves

Inlet Metering Valves

Pressure Control Valves

Volume Control Valves



DISCOVER

DIESEL

EXCELLENCE

# COPPER WASHER & BACK LEAK KITS

## AUTOMOTIVE & COMMERCIAL

Merlin are pleased to offer a new line of aftermarket heat shield washer kits.

The kits have been hand selected to cover the most popular references from all major brands.

There are two kits on offer servicing the automotive and commercial sectors which cover both common rail and EUI.

SECTOR	PART No.	REFERENCES	CONTENTS
COMMERCIAL	M003-53500	23	575
AUTOMOTIVE	M003-53501	23	575



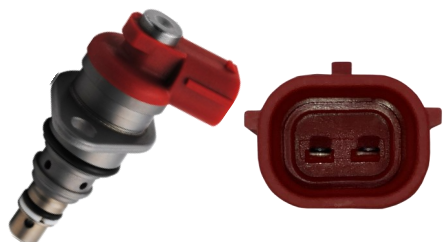
Designed to make the vehicle technicians life easier, the back-leak kits are comprised of the most popular references in one handy product.

BRAND	PART No.	REFERENCES	CONTENTS
BOSCH KIT 1	M003-500D	21	109
BOSCH KIT 2	M003-500C	17	85
DELPHI	M003-500E	19	95
DENSO	M003-500F	21	127
O-RINGS	M003-500A	8	800
CLIPS	M003-500B	6	150



We are also now offering replacement connector clips and O-ring kits to compliment the new product lines.





**M002-017**

Equivalent to: [096710-0120](#)

Suction Control Valve

**Toyota**

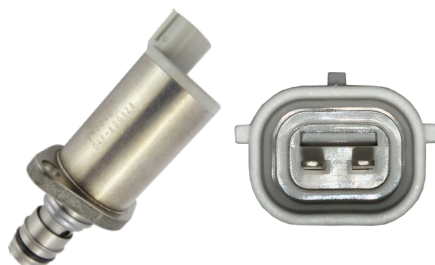


**M002-018**

Equivalent to: [096710-0130](#)

Suction Control Valve

**Toyota**



**M002-019**

Equivalent to: [294009-0990](#)

Suction Control Valve

**Toyota**

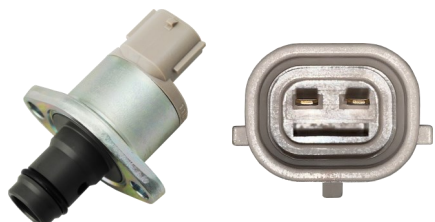


**M002-020**

Equivalent to: [294009-0120](#) / [DCRS300120](#)

Suction Control Valve

**Mazda / Mitsubishi / Nissan / Vauxhall / GM**



**M002-021**

Equivalent to: [294009-0260](#)

Suction Control Valve

**Citroen / Fiat / Ford / Land Rover / Nissan / PSA / Subaru**



**M002-022**

Equivalent to: [294200-0040](#)

Suction Control Valve

**Toyota**

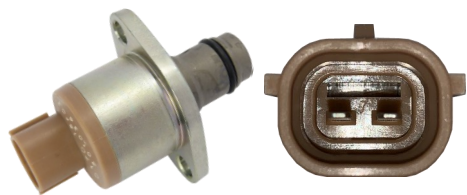


**M002-023**

Equivalent to: [294200-0160](#)

Suction Control Valve

**Mazda / Isuzu / Mitsubishi / John Deere / Ford / Kubota / Fuji /**

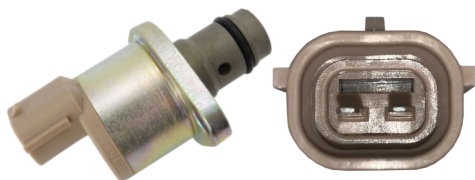


**M002-024**

Equivalent to: [294200-0170](#)

Suction Control Valve

**Hyundai / Hino / Isuzu / Sdec / Fawde**

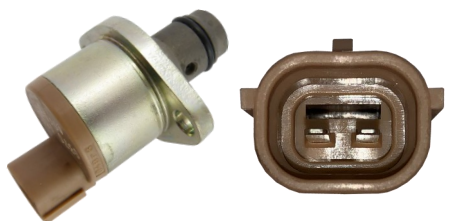


**M002-025**

Equivalent to: [294200-0300](#)

Suction Control Valve

**Toyota**

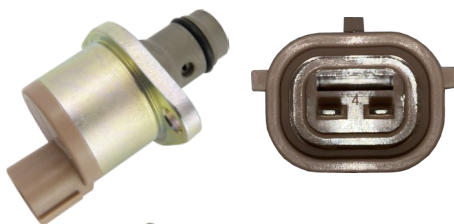


**M002-026**

Equivalent to: [294200-0370](#)

Suction Control Valve

**Hino / Isuzu / Fawde / Kubota**

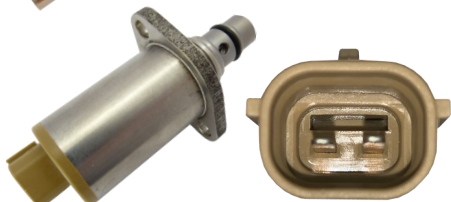


**M002-027**

Equivalent to: [294200-0460](#)

Suction Control Valve

**Mazda / Isuzu**



**M002-028**

Equivalent to: [294200-0650](#)

Suction Control Valve

**Isuzu**



**M002-029**

Equivalent to: [294200-2760](#)

Suction Control Valve

**Isuzu / Nissan / Mitsubishi / Yanmar / Vecv / Kubota / Hyundai**



**M002-030**

Equivalent to: [9109-903](#)

Inlet Metering Valve Kit

**Ford / Renault**



**M002-031**

Equivalent to: [9109-930A](#)

Inlet Metering Valve Kit

**Mercedes Benz**





**M002-041**

Equivalent to: [X39 800 300 006Z](#)

Volume Control Valve

**PSA / Ford**



**M002-042**

Equivalent to: [A2C2000385980](#)

Pressure Control Valve

**Land Rover**



**M002-043**

Equivalent to: [X39-800-300-005Z /](#)

Pressure Control Valve

**PSA**



**M002-044**

Equivalent to: [X39-800-300-018Z](#)

Volume Control Valve

**PSA**



**M002-045**

Equivalent to: [A2C8761150080](#)

Pressure Control Valve

**PSA / Ford**



**M002-047**

Equivalent to: [A2C9318740080](#)

Pressure Control Valve

**Ford Transit**



**M002-152 M002-153**

Equivalent to: [312-5620](#)

CAT/Mitsubishi Solenoid

M002-153 Supplied with O-ring

## DELPHI SUCTION CONTROL VALVES

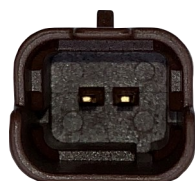
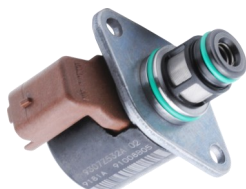


**9109-903**

Equivalent to: [M002-030](#)

Inlet Metering Valve Kit

**Ford / Renault**



**9109-927**

Inlet Metering Valve Kit

**Citroen / JCB / Peugeot**



**9109-930A**

Equivalent to: [M002-031](#)

Inlet Metering Valve Kit

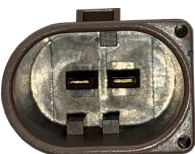
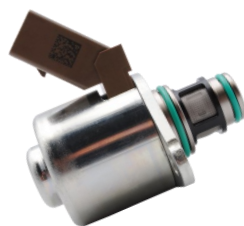
**Mercedes Benz**



**9109-936A**

Inlet Metering Valve Kit

**Bobcat / Citroen / Dacia / Daedong / Doosan / DS / Fiat / Ford / JCB / Kia / LS Tractors / Peugeot / Ssangyong**



**9109-946**

Equivalent to: [28233374](#)

Inlet Metering Valve Kit

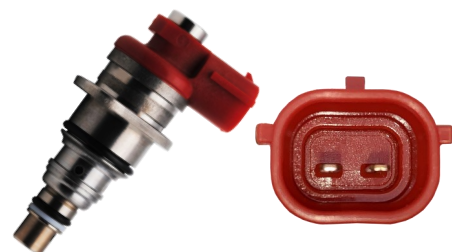
**Audi / Chevrolet / Hyundai / Infiniti / Kia / Merc / Seat / Opel / Skoda / Ssangyong / Vauxhall / VW**



**9307-522A**

Pressure Control Valve

**Mercedes Benz**



**096710-0120**

Kit (Includes red & green): [DCRS210120](#)

Suction Control Valve

**Toyota**

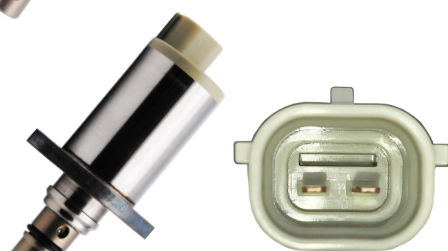


**096710-0130**

Kit (Includes red & green): [DCRS210120](#)

Suction Control Valve

**Toyota**

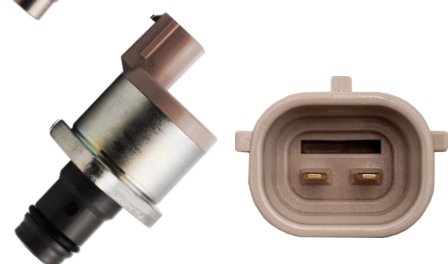


**294200-0040**

Equivalent to: [294009-0660](#)

Suction Control Valve

**Toyota**



**294200-0300**

Equivalent to: [294009-1370](#)

Suction Control Valve

**Toyota**



**294200-0310**

Equivalent to: [294009-1380](#)

Suction Control Valve

**Toyota**

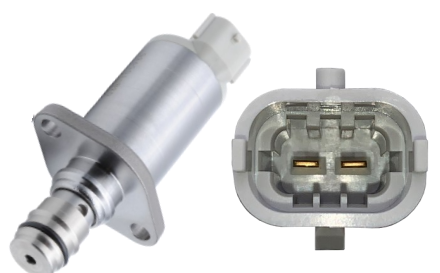


**294009-0260**

Equivalent to: [294200-0360](#)

Suction Control Valve

**Isuzu, Mitsubishi, Ford, Mazda, John Deere, Hino, Kubota, Opel,**



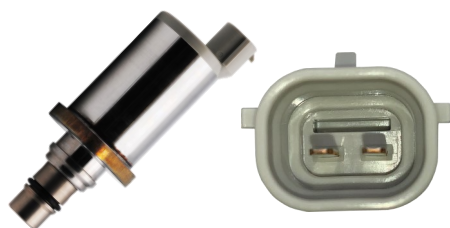
**294200-0610**

Equivalent to: [294009-0980](#)

Suction Control Valve

**Toyota**

## DENSO PRESSURE/VOLUME CONTROL VALVES

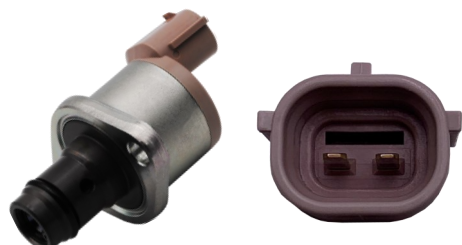


**294009-0120**

Equivalent to: [294200-0660](#)

Suction Control Valve

**Mazda, John Deere, Isuzu, Nissan, Hino, Mitsubishi, Perkins,**



**294009-0190**

Equivalent to: [294200-0160](#)

Suction Control Valve

**Mazda**



**294009-1110**

Equivalent to: [294200-0460](#)

Suction Control Valve

**Mazda, Opel, Isuzu**

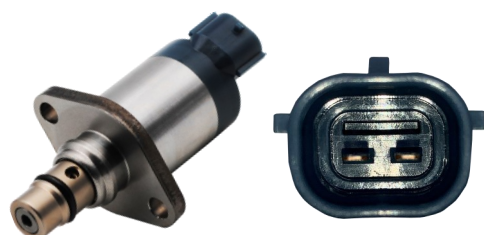


**294009-1990**

Equivalent to: [294009-1500](#)

Suction Control Valve

**GM**

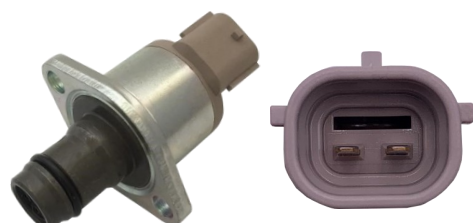


**294200-2760**

Equivalent to: [294009-1700](#)

Suction Control Valve

**Isuzu, Nissan, Yanmar, Mitsubishi, Kubota, Tico, Hyundai, IHI**



**DCRS300250**

Equivalent to: [294009-0250](#)

Suction Control Valve

**Mitsubishi**





**A2C20000719Z**

Volume Control Valve

**Citroen, Jaguar, Land Rover, Peugeot,**



**A2C2000382580**

Volume Control Valve

**Land Rover**



**A2C2720007280**

Volume Control Valve

**Navistar**



**A2C53259841Z**

Volume Control Valve

**Renault**



**A2C5329064080**

Volume Control Valve

**VW, DV6C PSA**



**A2C8761150080**

Volume Control Valve

**Ford DV6C, K9K Gen 6**

## VDO PRESSURE/VOLUME CONTROL VALVES



**A2C9318740080**

Volume Control Valve

**Ford Puma**



**X39-800-300-006Z**

Volume Control Valve

**Citroen, Ford, Peugeot**



**X39-800-300-018Z**

Volume Control Valve

**Citroen, Peugeot**



**A2C59506225**

Pressure Control Valve

**Citroen, Dacia, Fiat, Ford, Jaguar, Land Rover, Nissan, Peugeot, Renault**



**A2C2000070480**

Pressure Control Valve

**Jaguar, Range Rover, Land Rover**



**A2C2000385980**

Pressure Control Valve

**Citroen, Jaguar, Land Rover**

# COMMON RAIL – RAIL

## PRESSURE SENSORS, REGULATORS AND VALVES

Merlin Diesel offer a comprehensive range of common rail genuine and aftermarket Sensors, regulators and limiters

Our range of rail sensors includes all the top component manufacturers including Bosch, Delphi, Continental and Denso, which will cover most of the European market OM vehicle makes.

The common rail pressure sensor monitors the fuel pressure in the rail. The constant measurement is relayed to the ECU. This enables the ECU to deliver the correct amount of fuel which the vehicle demands.



[Pressure Sensor](#)

The common rail pressure regulator controls the pressure of the rail. The pressure of the rail must be a constant and even pressure controlled by the regulator.



[Pressure Regulator](#)

The common rail pressure limiting valve reduces the system pressure in case of overload and thus protects the other injection components from damage.



[Pressure Limiting Valve](#)



- Diesel Pump / Injector / Test and Repair
- Suppliers of New and Remanufactured Pumps / Injectors
- Technical Support
- Test Equipment
- Parts Sales
- Injector Software Coding Solutions

#### EXPORT SALES

T: +44(0)1772 694133

E: [export@merlindiesel.com](mailto:export@merlindiesel.com)

#### UK SALES

T: +44(0)1772 694130

E: [uksales@merlindiesel.com](mailto:uksales@merlindiesel.com)

#### TEST EQUIPMENT

T: +44(0)1772 694185

E: [testequipment@merlindiesel.com](mailto:testequipment@merlindiesel.com)



Merlin Diesel Systems Ltd | 189-191 Bradkirk Place | Walton Summit Centre | Preston | Lancashire | PR5 8AJ