



PUMP REPAIR

COMMON RAIL

Suction Control Valves

Inlet Metering Valves

Pressure Control Valves

Volume Control Valves



DISCOVER

DIESEL

EXCELLENCE

COPPER WASHER & BACK LEAK KITS

AUTOMOTIVE & COMMERCIAL

Merlin are pleased to offer a new line of aftermarket heat shield washer kits.

The kits have been hand selected to cover the most popular references from all major brands.

There are two kits on offer servicing the automotive and commercial sectors which cover both common rail and EUI.

SECTOR	PART No.	REFERENCES	CONTENTS
COMMERCIAL	M003-53500	23	575
AUTOMOTIVE	M003-53501	23	575



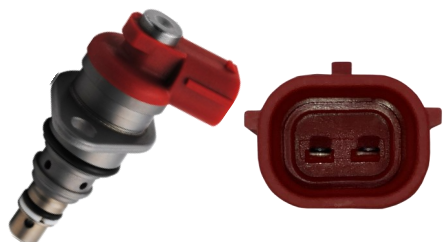
Designed to make the vehicle technicians life easier, the back-leak kits are a comprehensive inventory of the relevant sector, in one handy product.

BRAND	PART No.	REFERENCES	CONTENTS
BOSCH KIT 1	M003-500D	21	109
BOSCH KIT 2	M003-500C	17	85
DELPHI	M003-500E	19	95
DENSO	M003-500F	21	127
O-RINGS	M003-500A	8	800
CLIPS	M003-500B	6	150



We are also now offering replacement connector clips and O-ring kits to compliment the new product lines.





M002-017

Equivalent to: [096710-0120](#)

Suction Control Valve

Toyota

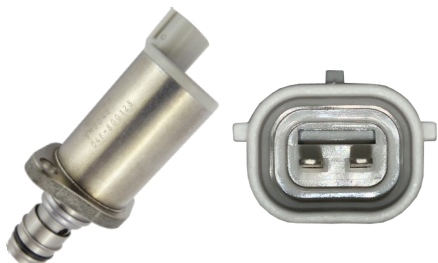


M002-018

Equivalent to: [096710-0130](#)

Suction Control Valve

Toyota



M002-019

Equivalent to: [294009-0990](#)

Suction Control Valve

Toyota

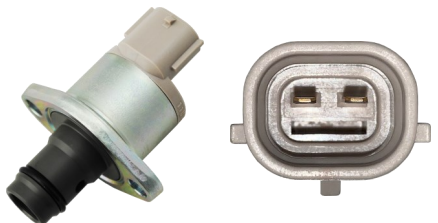


M002-020

Equivalent to: [294009-0120](#) / [DCRS300120](#)

Suction Control Valve

Mazda / Mitsubishi / Nissan / Vauxhall / GM

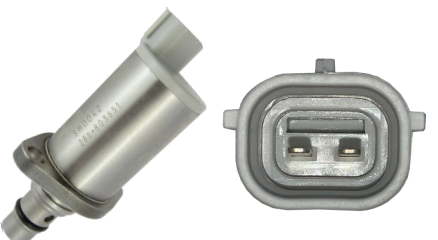


M002-021

Equivalent to: [294009-0260](#)

Suction Control Valve

Citroen / Fiat / Ford / Land Rover / Nissan / PSA / Subaru

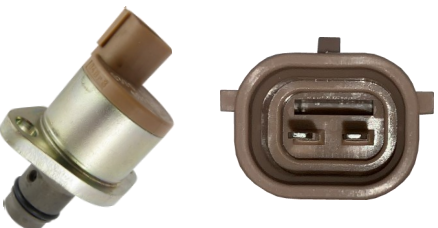


M002-022

Equivalent to: [294200-0040](#)

Suction Control Valve

Toyota

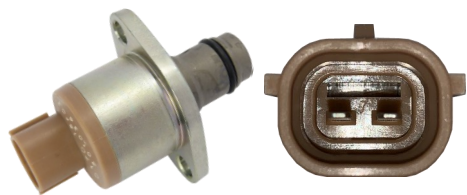


M002-023

Equivalent to: [294200-0160](#)

Suction Control Valve

Mazda / Isuzu / Mitsubishi / John Deere / Ford / Kubota / Fuji / Nissan



M002-024

Equivalent to: [294200-0170](#)

Suction Control Valve

Hyundai / Hino / Isuzu / Fawde

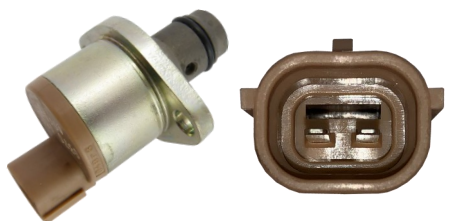


M002-025

Equivalent to: [294200-0300](#)

Suction Control Valve

Toyota

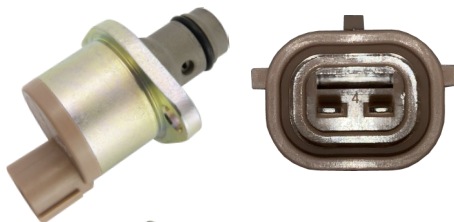


M002-026

Equivalent to: [294200-0370](#)

Suction Control Valve

Hino / Isuzu / Fawde / Kubota

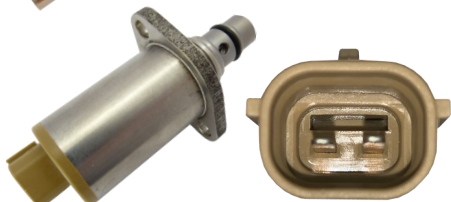


M002-027

Equivalent to: [294200-0460](#)

Suction Control Valve

Mazda / Isuzu



M002-028

Equivalent to: [294200-0650](#)

Suction Control Valve

Isuzu



M002-029

Equivalent to: [294200-2760](#)

Suction Control Valve

Isuzu / Nissan / Mitsubishi / Yanmar / Kubota / Hyundai



M002-030

Equivalent to: [9109-903](#)

Inlet Metering Valve Kit

Ford / Renault



M002-031

Equivalent to: [9109-930A](#)

Inlet Metering Valve Kit

Mercedes Benz



M002-041

Equivalent to: [X39 800 300 006Z](#)

Volume Control Valve

PSA / Ford



M002-042

Equivalent to: [A2C2000385980](#)

Pressure Control Valve

Land Rover



M002-043

Equivalent to: [X39-800-300-005Z](#) / [A2C59506225](#)

Pressure Control Valve

PSA



M002-044

Equivalent to: [X39-800-300-018Z](#)

Volume Control Valve

PSA



M002-045

Equivalent to: [A2C8761150080](#)

Pressure Control Valve

PSA / Ford



M002-047

Equivalent to: [A2C9318740080](#)

Pressure Control Valve

Ford Transit



M002-152 M002-153

Equivalent to: [312-5620](#)

CAT/Mitsubishi Solenoid

M002-153 Supplied with O-ring

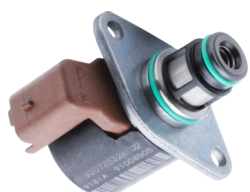


9109-903

Equivalent to: [M002-030](#)

Inlet Metering Valve Kit

Ford / Renault



9109-927

Inlet Metering Valve Kit

Citroen / JCB / Peugeot



9109-930A

Equivalent to: [M002-031](#)

Inlet Metering Valve Kit

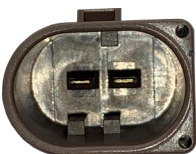
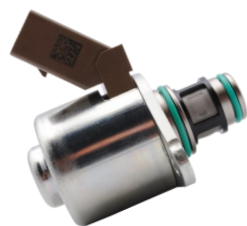
Mercedes Benz



9109-936A

Inlet Metering Valve Kit

Bobcat / Citroen / Dacia / Daedong / Doosan / DS / Fiat / Ford / JCB / Kia / LS Tractors / Peugeot / Ssangyong



9109-946

Equivalent to: [28233374](#)

Inlet Metering Valve Kit

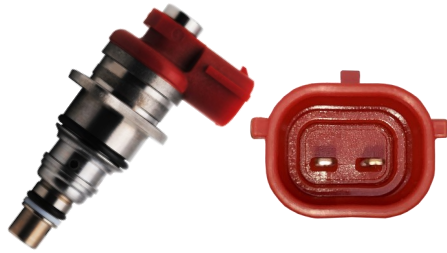
Audi / Chevrolet / Hyundai / Infiniti / Kia / Merc / Seat / Opel / Skoda / Ssangyong / Vauxhall / VW



9307-522A

Pressure Control Valve

Mercedes Benz



096710-0120

Kit (Includes red & green): [DCRS210120](#)

Suction Control Valve

Toyota

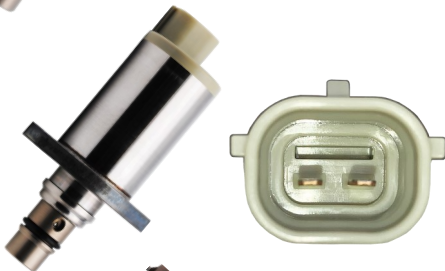


096710-0130

Kit (Includes red & green): [DCRS210120](#)

Suction Control Valve

Toyota

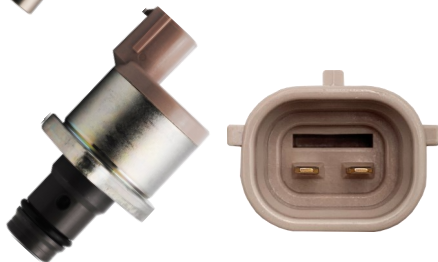


294200-0040

Equivalent to: [294009-0660](#)

Suction Control Valve

Toyota



294200-0300

Equivalent to: [294009-1370](#)

Suction Control Valve

Toyota



294200-0310

Equivalent to: [294009-1380](#)

Suction Control Valve

Toyota

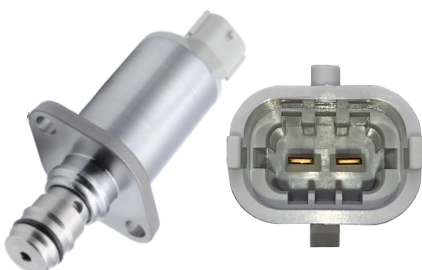


294009-0260

Equivalent to: [294200-0360](#)

Suction Control Valve

Isuzu / Mitsubishi / Ford / Mazda / John Deere / Hino / Kubota / Opel, Subaru / Kubota



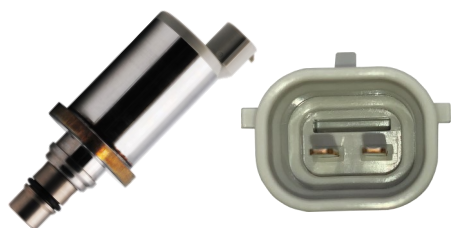
294200-0610

Equivalent to: [294009-0980](#)

Suction Control Valve

Toyota

DENSO PRESSURE/VOLUME CONTROL VALVE

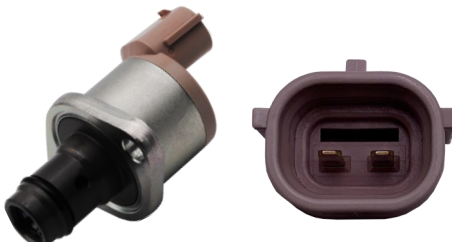


294009-0120

Equivalent to: [294200-0660](#)

Suction Control Valve

Mazda / John Deere / Isuzu / Nissan / Hino / Mitsubishi / Perkins / Kubota / Opel



294009-0190

Equivalent to: [294200-0160](#)

Suction Control Valve

Mazda



294009-1110

Equivalent to: [294200-0460](#)

Suction Control Valve

Mazda / Opel / Isuzu



294009-1990

Equivalent to: [294009-1500](#)

Suction Control Valve

GM

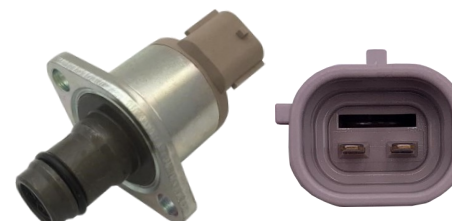


294200-2760

Equivalent to: [294009-1700](#)

Suction Control Valve

Isuzu / Nissan / Yanmar / Mitsubishi / Kubota / Tico / Hyundai / IHI



DCRS300250

Equivalent to: [294009-0250](#)

Suction Control Valve

Mitsubishi



A2C20000719Z

Volume Control Valve

Citroen / Jaguar / Land Rover / Peugeot,



A2C2000382580

Volume Control Valve

Land Rover



A2C2720007280

Volume Control Valve

Navistar



A2C53259841Z

Volume Control Valve

Renault



A2C5329064080

Volume Control Valve

VW / DV6C PSA



A2C8761150080

Volume Control Valve

Ford DV6C / K9K Gen 6

VDO PRESSURE/VOLUME CONTROL VALVES



A2C9318740080

Volume Control Valve

Ford Puma



X39-800-300-006Z

Volume Control Valve

Citroen / Ford / Peugeot



X39-800-300-018Z

Volume Control Valve

Citroen, Peugeot



A2C59506225

Pressure Control Valve

**Citroen / Dacia / Fiat / Ford / Jaguar / Land Rover / Nissan /
Peugeot / Renault**



A2C2000070480

Pressure Control Valve

Jaguar / Range Rover / Land Rover



A2C2000385980

Pressure Control Valve

Citroen / Jaguar / Land Rover

COMMON RAIL – RAIL

PRESSURE SENSORS, REGULATORS AND VALVES

Merlin Diesel offer a comprehensive range of common rail genuine and aftermarket Sensors, regulators and limiters.

Our range of rail sensors includes all the top component manufacturers including: Bosch, Delphi, Continental and Denso, which will cover most of the European market OM vehicle makes.

The common rail pressure sensor monitors the fuel pressure in the rail. The constant measurement is relayed to the ECU. This enables the ECU to deliver the correct amount of fuel which the vehicle demands.



[Pressure Sensor](#)

The common rail pressure regulator controls the pressure of the rail. The pressure of the rail must be a constant and even pressure controlled by the regulator.



[Pressure Regulator](#)

The common rail pressure limiting valve reduces the system pressure in case of overload and thus protects the other injection components from damage.



[Pressure Limiting Valve](#)



- Diesel Pump / Injector / Test and Repair
- Suppliers of New and Remanufactured Pumps / Injectors
- Technical Support
- Test Equipment
- Parts Sales
- Injector Software Coding Solutions

EXPORT SALES

T: +44(0)1772 694133

E: export@merlindiesel.com

UK SALES

T: +44(0)1772 694130

E: uksales@merlindiesel.com

TEST EQUIPMENT

T: +44(0)1772 694185

E: testequipment@merlindiesel.com



Merlin Diesel Systems Ltd | 189-191 Bradkirk Place | Walton Summit Centre | Preston | Lancashire | PR5 8AJ



BOSCH
Invented for life



Perkins



DENSO

ROBIEL



Stanadyne

YANMAR



vitesco
TECHNOLOGIES